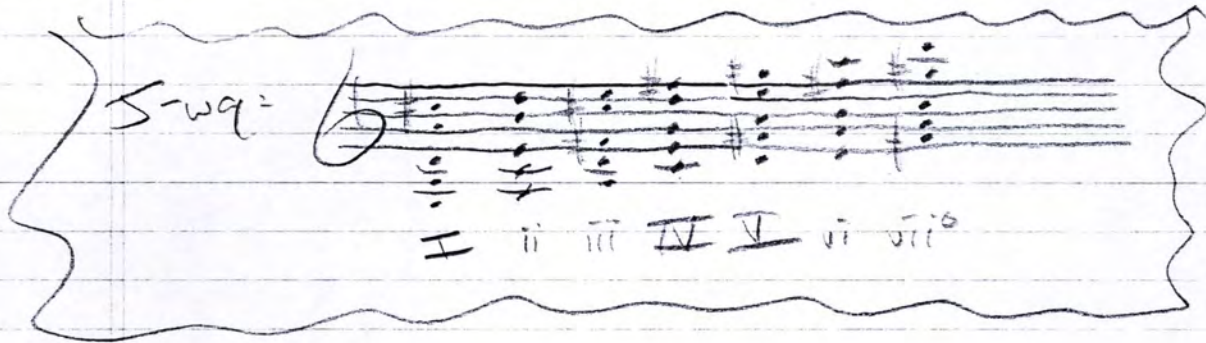


AG

ME.

A B C⁺ D E F⁺ G^o

G A⁻ B⁻ C D E F^o



mi.

A⁻ A B^o B⁻ C C⁺ D⁻ D E⁻ E F F^o G G⁺

G⁻ G A^o A⁻ B⁻ B⁺ C⁻ C D⁻ D E⁻ E^o F F^o

AG
Polka

Handwritten musical notation on a single staff, featuring a treble clef, a 2/4 time signature, and a key signature of one flat. The notation includes a series of eighth and sixteenth notes with stems, some beamed together, and rests. A large 'A' is written at the beginning of the staff.

Handwritten musical notation on a single staff, featuring a treble clef and a key signature of one flat. The notation includes a series of eighth and sixteenth notes with stems, some beamed together, and rests.

start
↓

Handwritten musical notation on a single staff, featuring a treble clef, a 2/4 time signature, and a key signature of one flat. The notation includes a series of eighth and sixteenth notes with stems, some beamed together, and rests. A large 'A' is written at the beginning of the staff. A bracket is drawn above the notes, and a downward arrow points from the word 'start' above to the first measure.

AI

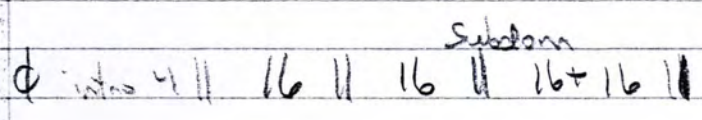
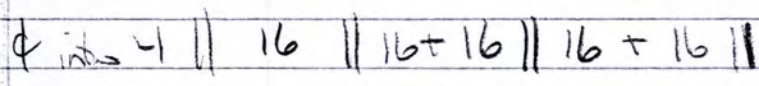
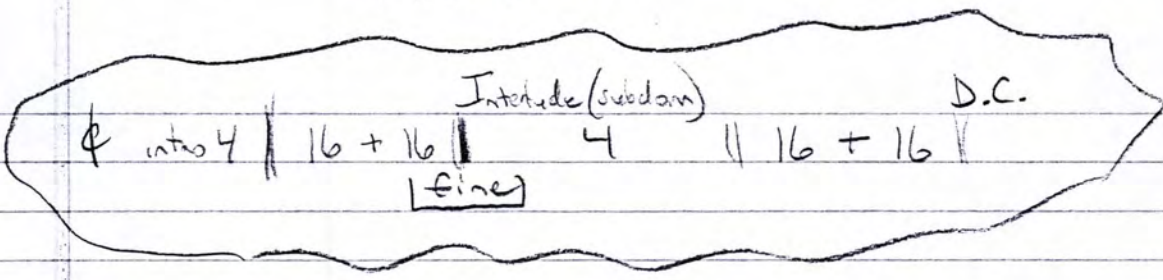
Handwritten musical notation on two staves. The top staff contains notes with chord symbols A , A° , A , A° , A above them. The bottom staff contains notes with chord symbols G , G° , G , G° , A above them. The notation includes stems, beams, and some accidentals.

Handwritten musical notation on two staves. The top staff contains notes with chord symbols G° , G° , G° , G° , A° , A° , A° , A° above them. The bottom staff contains notes with stems and beams. The notation is somewhat sparse and includes some accidentals.

Handwritten musical notation on two staves. The top staff contains notes with chord symbols G , G° , G° , G° , A , A° , A° , A° above them. The bottom staff contains notes with stems and beams. The notation includes some accidentals and a final cadence-like structure.

Polka form

AG



NAME

Handwritten musical notation on a single staff, consisting of a series of dots representing notes. Below the staff, the text "ALAN GEMBERLIN 1956" is written. To the right of the staff, there is a circled number "17" with a flat symbol (b) above it.

BLUES

Handwritten musical notation on a single staff, consisting of a series of dots representing notes. Below the staff, there are several empty staves.

FANFARE

Handwritten musical notation on a single staff, consisting of a series of dots representing notes. Below the staff, there are several empty staves.

AG DICTIONARY

A MAJOR
COMMON CHORDS =

0 =

5-WAY

LEFT-OVER
0 = I =

I =

0 + I =

I II III IV V VI VII⁰

BLUES

ALAN GEMBERLING 9/17/1956

THREE-CHORDS =

0 = I =

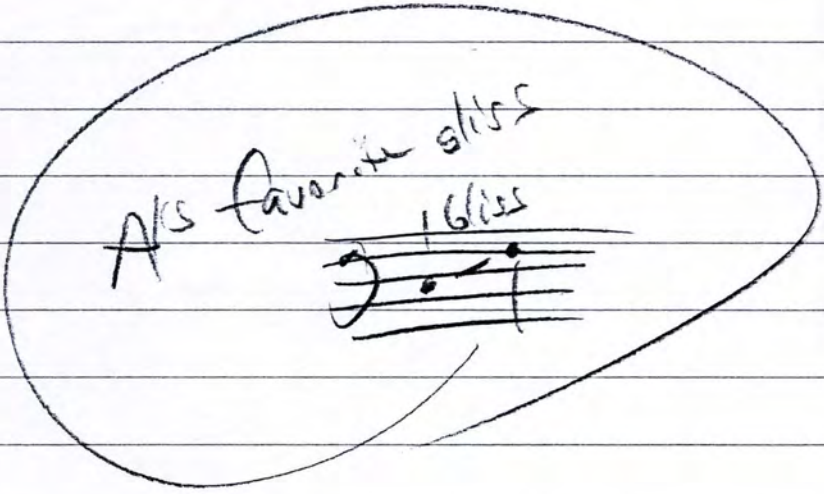
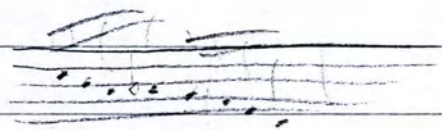
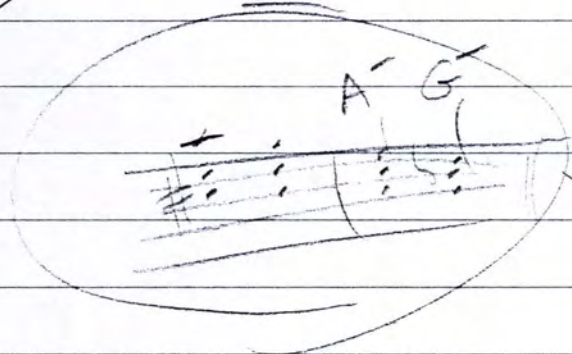
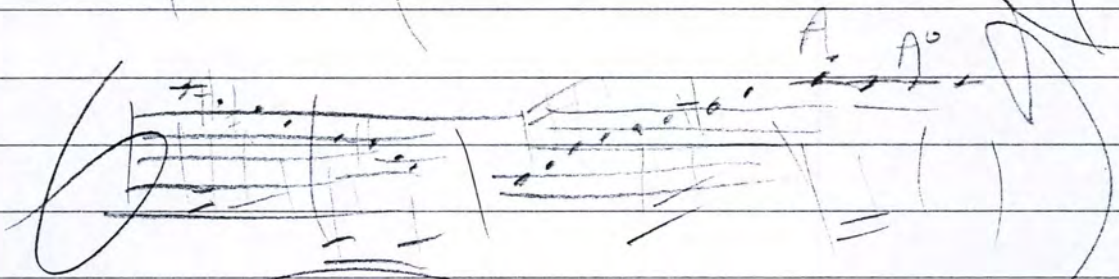
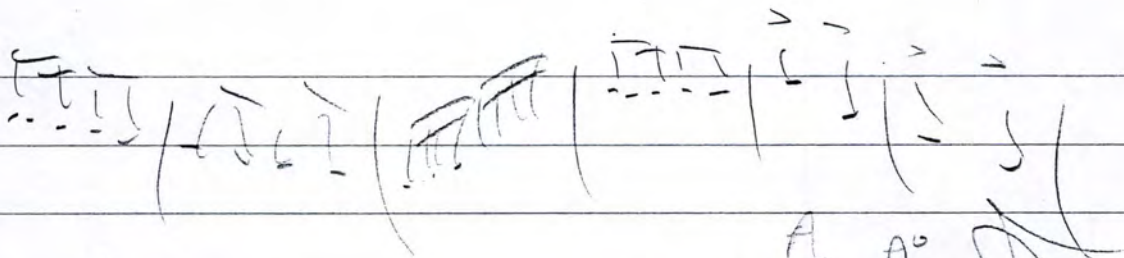
8 (HALF-STEPS)

8

2-3-4 VOICINGS

2+3

HIM



Theme 1

5-voice

O: 3-voice I: 2-voice

Theme-chord

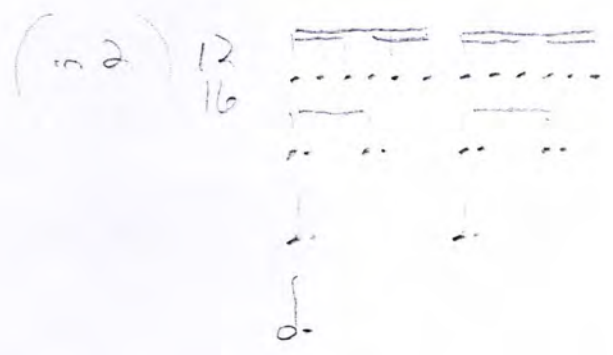
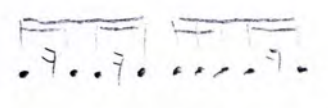
Handwritten musical notation on a grand staff. The treble clef part contains notes and accidentals. The bass clef part contains notes and accidentals. A circled section in the treble clef is labeled "G (all-qualities)". A circled section in the bass clef is labeled "A^{aug}". A circled section in the bass clef is labeled "G/A^{all-qualities Original}".

Handwritten musical notation on a grand staff. The treble clef part contains notes and accidentals. The bass clef part contains notes and accidentals. A circled section in the bass clef is labeled "Bass".

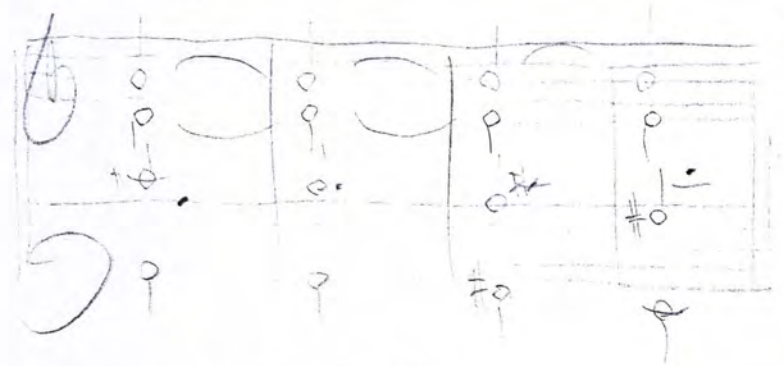
Handwritten musical notation on a grand staff. The treble clef part contains notes and accidentals. The bass clef part contains notes and accidentals. A circled section in the bass clef is labeled "Dominant Functions".

Handwritten musical notation on a grand staff. The treble clef part contains notes and accidentals. The bass clef part contains notes and accidentals. A circled section in the bass clef is labeled "A". A circled section in the bass clef is labeled "G/A^{all-qualities Perfect Inversion}". A circled section in the bass clef is labeled "Bass".

Factors



Chaconne



Chaconne [From G. "Him" to A. "in"]

Aug 10

(st 2)

4-

3-

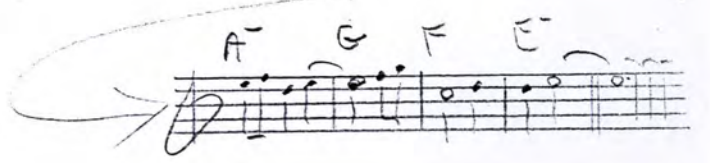
2-

1-

A⁻ G F E⁻ A⁻ G F E⁻ A⁻ G F E⁻

Melody

A⁻ G^{add2} F^{Δ9} E^{-add4}



Handwritten musical notation for the first system. It consists of three staves. The top staff is in treble clef with a key signature of one flat (B-flat). It contains a complex melodic line with many beamed notes and slurs. The middle staff has a few notes with slurs. The bottom staff contains a series of notes with stems pointing downwards, possibly indicating a bass line or a specific rhythmic pattern.

Handwritten musical notation for the second system. It consists of three staves. The top staff is in treble clef with a key signature of one flat. It shows a melodic line with notes and slurs. The middle staff has notes with stems pointing downwards. The bottom staff has two notes with stems pointing downwards.

Handwritten musical notation for the third system. It consists of three staves. The top staff is in treble clef with a key signature of one flat. It shows a melodic line with notes and slurs. The middle staff has a wavy line, possibly representing a tremolo or a specific rhythmic effect. The bottom staff is empty.

Handwritten musical score for Horn and Tuba. The score is written on two staves. The top staff is labeled "Horn" and the bottom staff is labeled "Tuba". The music is in 2/4 time and consists of several measures. The notation includes notes, rests, and dynamic markings. Above the staff, there are handwritten notes: "Gandhi", "A6", "G", and "A" with a double bar line and "2nd" below it. The score ends with a double bar line.

*

Handwritten musical score system 1, consisting of five staves. The top staff contains a melodic line with various notes and rests. The second staff has a similar melodic line with some scribbles. The third staff contains a bass line with notes and rests. The fourth and fifth staves are mostly empty, with some faint markings. The system is enclosed in a large bracket on the left side.

Handwritten musical score system 2, consisting of five staves. The top staff contains a melodic line with notes and rests. The second staff has a similar melodic line with some scribbles. The third staff contains a bass line with notes and rests. The fourth and fifth staves are mostly empty, with some faint markings. The system is enclosed in a large bracket on the left side.

6/8 G° G- G G+ A° A- A A+



Handwritten musical notation on a grand staff (treble and bass clefs). The notation includes notes, rests, and dynamic markings. Above the staff, there are handwritten notes: G G G A A G G G A B. The word "GLASS" is written in the right margin. A star symbol is in the top right corner. Measure numbers 24, 25, 26, 27, 28, 29, 30, 31, and 32 are written below the staff.

Handwritten musical notation on a grand staff. The notation includes notes, rests, and dynamic markings. Measure numbers 37, 38, 39, 40, and 41 are written below the staff.

Handwritten musical notation on a grand staff. The notation includes notes, rests, and dynamic markings. The word "Unison" is written above the staff. Measure numbers 42, 43, 44, 45, 46, 47, and 48 are written below the staff.

A G A G

The image shows a handwritten musical score on a single staff. The notation is in treble clef and consists of four measures. Above each measure is a letter indicating a guitar chord: 'A' for the first, 'G' for the second, 'A' for the third, and 'G' for the fourth. The notes are written as eighth notes, with some beamed together. Below the staff, there are four fret numbers: '1', '2', '3', and '4', which correspond to the four measures. The first measure has a circled '1' below it. The second measure has a '2' below it. The third measure has a '3' below it. The fourth measure has a '4' below it. The notes in the first measure are G4, A4, B4, C5, D5, E5, F5, G5. The notes in the second measure are G4, A4, B4, C5, D5, E5, F5, G5. The notes in the third measure are G4, A4, B4, C5, D5, E5, F5, G5. The notes in the fourth measure are G4, A4, B4, C5, D5, E5, F5, G5. The staff is otherwise empty.

*

2
4 G^{ab}

A^{ab}

* AG
Polka
(Oct. 20)

Handwritten musical notation for the first system. It consists of three staves. The top staff has a treble clef and a 2/4 time signature. The key signature has one flat (B-flat). The melody line contains several measures of music with eighth and quarter notes. The two lower staves provide accompaniment with chords and rhythmic markings.

Handwritten musical notation for the second system. It consists of three staves. The top staff has a treble clef and a 2/8 time signature. The key signature has one flat (B-flat). The melody line contains several measures of music with eighth notes. A large, sweeping scribble covers the rest of the system, obscuring the accompaniment lines.



12pt (harm)

A G A G A G A

5 6 7 8 9 10 11 12

9 10 11 12

A G A G A G A

17 18 17 20 21 22 23 24

Ab
Aug-19

name/birthday theme

Handwritten musical score for the first system. The treble staff contains a melody with notes and rests, marked with accents (>) and asterisks (*). The bass staff provides accompaniment with chords and notes. Dynamic markings include *f* and *ff*. A section of the score is labeled "Unison Tpts/brn".

A | a n G e m b e r | i n g , 9 / 1 7 / 1 9 5 6

Handwritten musical score for the second system. The treble staff contains a melody with notes and rests, marked with accents (>) and asterisks (*). The bass staff provides accompaniment with chords and notes. The text "BACK-GROUND FOR TEXT. 2 MELODY" is written below the bass staff.

Handwritten musical score for the third system. The treble staff contains a melody with notes and rests. The bass staff provides accompaniment with chords and notes.

Handwritten musical score for the fourth system. The treble staff contains a melody with notes and rests. The bass staff provides accompaniment with chords and notes.

F C CB^b C^b F C B^b F B^b C F C B^b C C B^b F B^b F B^b C F B^b C B^b C F

C pedal... primary triad hymn

Tpt 2

Horn

Trbn.

Tuba

→

Handwritten musical score for Horn, Trumpet 1, and Tuba. The score is written on a grand staff with a treble clef on the top staff and a bass clef on the bottom staff. The time signature is 2/4. The music consists of several measures with notes, rests, and dynamic markings. The Horn part is in the treble clef, and the Tuba part is in the bass clef. The Trumpet 1 part is also in the treble clef. The score includes a double bar line at the end of the first system.

Labels: Horn, Trumpet 1, Tuba, Grandia, A⁶, G⁶, A² x^{er}



Handwritten musical score for the first system, consisting of five staves. The notation includes various notes, rests, and dynamic markings such as 'p' and 'f'. There are some scribbles and corrections in the first two staves.

Handwritten musical score for the second system, consisting of five staves. The notation includes various notes, rests, and dynamic markings such as 'p' and 'f'. There are some scribbles and corrections in the first two staves.

G G° G- G G+ A° A- A A+

*



Handwritten musical notation for the first system, including a treble clef, a key signature of one sharp (F#), and a 2/4 time signature. The notation consists of a melody line with eighth and quarter notes, and a bass line with chords. Above the staff, the following chords are written: G, G+, G°, G-, A, A+, A°, A-, G, G+, G°, G-, A, A+, A°, A-. The system concludes with a double bar line and the word "Gliss" written across the staff.

Handwritten musical notation for the second system, continuing the melody and bass lines. The notation includes a treble clef, a key signature of one sharp (F#), and a 2/4 time signature. The system concludes with a double bar line and the word "Gliss" written across the staff.

Four empty musical staves at the bottom of the page, each consisting of five horizontal lines.

2
4 G♯

A♯

AG
Polka
(Oct. 20)

A G A G

55 56 132 133 134 135 136 137

128 129 130 131

79 80

138 139 140 141 142 143 144 145 146 147 148



Handwritten musical notation on a grand staff. The top staff contains complex rhythmic patterns with many notes and beams. The middle staff contains notes with stems and some accidentals. The bottom staff contains notes with stems and some accidentals. Below the bottom staff are two empty staves with downward-pointing arrows indicating fingerings or breath marks.

61 62 64 65 66 67 68

Handwritten musical notation on a grand staff. The top staff contains notes with stems and some accidentals. The middle staff contains notes with stems and some accidentals. The bottom staff contains notes with stems and some accidentals. Below the bottom staff are two empty staves with downward-pointing arrows indicating fingerings or breath marks.

69 70 71 72 73 74 76

Handwritten musical notation on a grand staff. The top staff contains notes with stems and some accidentals. The middle staff contains notes with stems and some accidentals. The bottom staff contains notes with stems and some accidentals. Below the bottom staff are two empty staves with downward-pointing arrows indicating fingerings or breath marks.

77 78



Trips (Chorus)

Chord symbols: G, A, G, A, G, G, A

Numbers below staff: 111, 92, 94, 17, 75, 104, 72, 85

Chord symbols: A, A, A, G, G, A

Numbers below staff: 85, 88, 89, 87, 85

Chord symbols: F, F, F, F, F

Numbers below staff: 94, 92, 94, 24

Chord symbols: G, A, G

Numbers below staff: 97, 100, 101, 102, 104, 105, 106

AG
Polka



Handwritten musical notation on a grand staff (treble and bass clefs). The key signature is one flat (B-flat). The time signature is 2/4. Above the first staff, the chord G^{ab} is written above the first measure and A^{ab} is written above the second measure. The notation includes eighth and sixteenth notes, rests, and a fermata over the final note of the first staff.

Handwritten musical notation on a grand staff. Above the first staff, the chord G is written above the first measure and A is written above the second measure. The notation includes chords, rests, and a fermata over the final note of the first staff.

$d/m/M/A$
backgrounds

Handwritten musical notation on a grand staff. Above the first staff, a series of chords are written: G^o , G^- , G , G^+ , A^o , A^- , A , and A^+ . The notation includes chords and rests.

I
from G
and A

Handwritten musical notation on a grand staff. The notation includes chords and rests.

A° G° A- G- A G A+ G+

A-G as triad roots

F+ E- F- E- F E- F+ G+

A-G as triad thirds

D#° D#° D- C- D C D+ C+

A-G as triad fifths

♩ = 90
♩ = 60

D^b C^{7sus4} F^b

♩ = 80

A/G major scale common tones

Negative = A⁺ major A/G minor CT Negative = B major

Triad = A G A- G-

Inversion = D- C- D C

↓ ↓ ↓ ↓

D⁷(A) C⁷(A) D⁹ C⁹

(all triad tones)


$\text{♩} = 90$

Handwritten musical notation on a grand staff. The upper staff contains a complex melodic line with many beamed notes and slurs. Above the staff, there are handwritten numbers: a large '4' at the beginning, and '3', '3', '3', '3' above various groups of notes. The lower staff contains a bass line with fewer notes.

Handwritten musical notation on a grand staff. The upper staff continues the melodic line with more complex rhythmic patterns. Above the staff, there are handwritten numbers: '3', '3', '2', '4'. The lower staff continues the bass line.

Handwritten musical notation on a grand staff. The upper staff continues the melodic line. Above the staff, there are handwritten numbers: '3', '3', '3', '4', '3', '3', '5'. The lower staff continues the bass line.

Handwritten musical notation on a grand staff. The upper staff features a series of chords, some with accidentals (sharps and naturals). Above the staff, there are handwritten numbers: '6', '6', '6', '6', '6', '4'. The lower staff contains a bass line with notes and rests. At the bottom of the page, there is a faint, partially obscured musical staff.

Whole-stop (a/m/a/A) triad-related  => lead to

Triad
Whole-stop

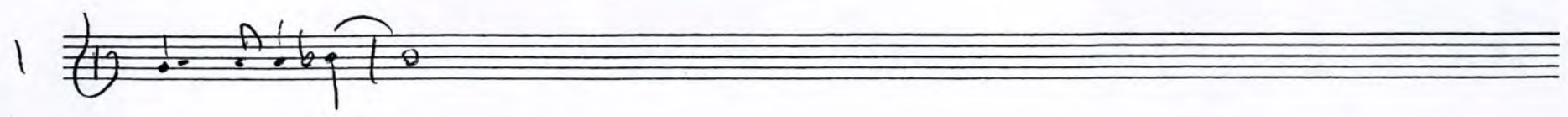
→
→



Handwritten musical score for the first system, consisting of four staves. The top two staves have arrows pointing to them from the left. The notation includes various notes, rests, and chord symbols like 'A' and 'm'. There are also some scribbles and dots under the notes in the first two staves.



Handwritten musical score for the second system, consisting of four staves. The notation includes notes, rests, and a '1st' marking above a note in the first staff. There are also some scribbles and dots under the notes in the bottom two staves.



Handwritten musical score for the third system, consisting of a single staff with a few notes and rests.