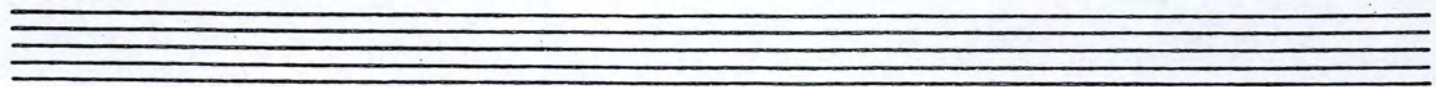
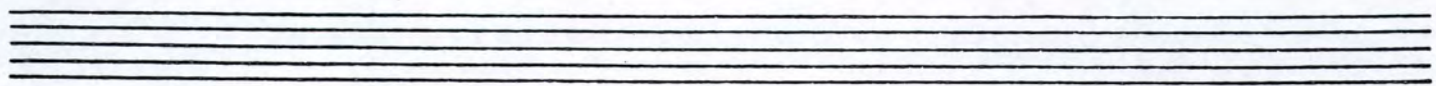


CODA

50

56

(BELL-TONES)



FLUGEL HORN

LULLANOVA

— Bukwicz —

GENTLE BOSSA NOVA

8

9 (BELL-TONES)

mf always

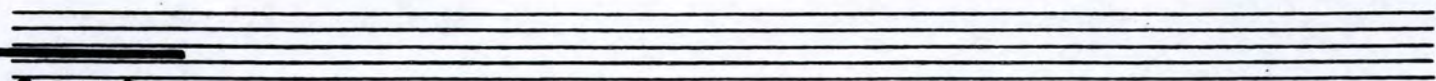
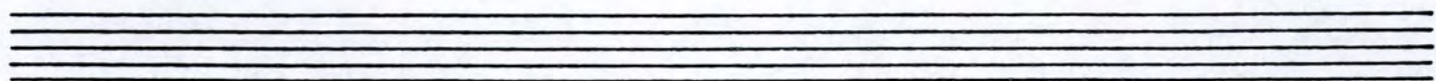
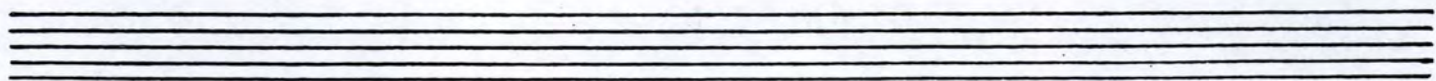
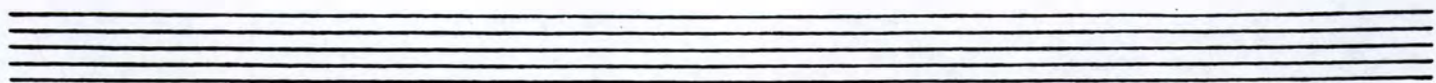
17 G⁻⁹ | LEAD D⁷(#9) | G⁻⁷ | D⁷(b9) | G⁻⁹ |

25 B^bΔ | B^b-(Δ) | F⁶ | F#7(#9) | G⁻⁷ | C⁻⁷ | A⁷(#9) |

33 G⁻⁹ | D⁷(#9) | G⁻⁷ | D⁷(b9) |

41 G⁻⁷ | G⁻⁷(b5) | C⁷(b9) | FΔ⁹ | D⁻⁷ | C⁻⁷ | F¹³ | B^bΔ⁹ | [D⁷(#9)] |

SOLOS ON FORM...
D.S. (9) AFTER
LAST SOLO



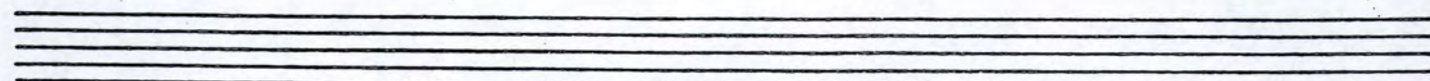
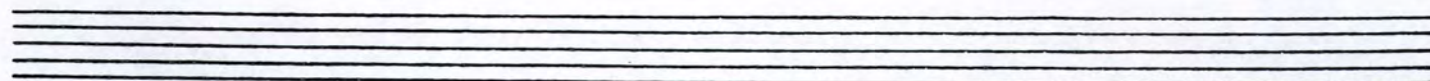
CODA

50

56

> (BELL-TONES)

The Coda section consists of three staves of handwritten musical notation. The first staff begins with a treble clef and a red circle around the first few notes. A box containing the number '50' is placed above the staff. The second staff continues the melody with various note values and rests. A box containing the number '56' is placed above the staff. The third staff features notes with accents (>) and the instruction '(BELL-TONES)' written above. The section concludes with a double bar line and a blacked-out end of the staff.



TROMBONE

LULLANOVA

— Bukwicz —

GENTLE BOSSA NOVA

8

9

(BELL-TONES)

17

(SMOOTH AND CONNECTED ALWAYS)

25

33

41

SOLOS ON FORM...

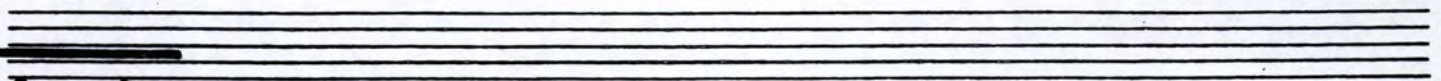
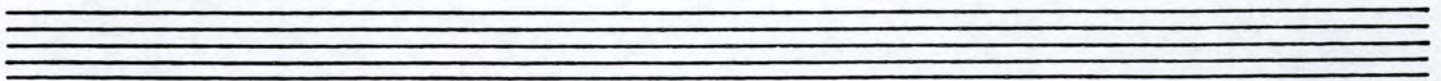
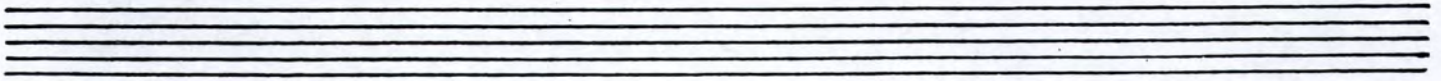
D.S. (9) AFTER

LAST SOLO

TROMBONE

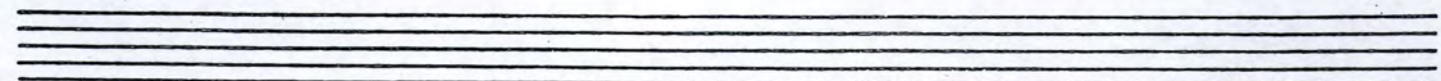
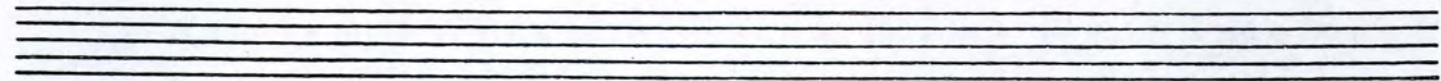
2.

LULLABY



CODA

Handwritten musical notation for the Coda section of the Trombone part. The notation includes notes with flats, a boxed '50', a boxed '56', and a '(BELL-TONES)' annotation with an accent mark. The section is enclosed in a bracket labeled 'CODA'.



PIANO
BASS

LULLANOVA

— Bukwicz —

GENTLE BOSSA NOVA

4

C7(#9) (NOT TIME)

9.5 C7(#9) (NOT TIME)

[C7(#9)]

17 TIME F-9 C7(#9) F-7 C7(b9) F-9 C7(#9)

Bb-7 Eb13 25 AbΔ Ab-(Δ) Eb9

PIANO
BASS

2.

LULLANDA

$E^7(\#9)$ F^{-7} B^b-7 $G^7(\#9)$ C^9 (WHOLE TONE) **33** F^{-7}
 $C^7(\#9)$ F^{-7} $C^7(b9)$ F^{-9} $C^7(\#9)$
 $G^{-7}(b5)$ $G^b\Delta^9(\#11)$ **41** F^{-7} $F^{-7}(b5)$ $B^b(b9)$ $E^b\Delta^9$ C^{-7}
 B^b-7 E^b13 $A^b\Delta^9$ $C^7(\#9)$ SOLOS ON FORM...
D.S. (9) AFTER
 (ARCO ON D.S.) LAST SOLO

CODA
 $G^b\Delta^9(\#11)$ **50** **6** ARCO
56 **4** $C^7(\#9)$ (NOT TIME)
 ARCO
 [$C^7(\#9)$] F° (add 2) SOLO MUS
 SUL E GLISS.