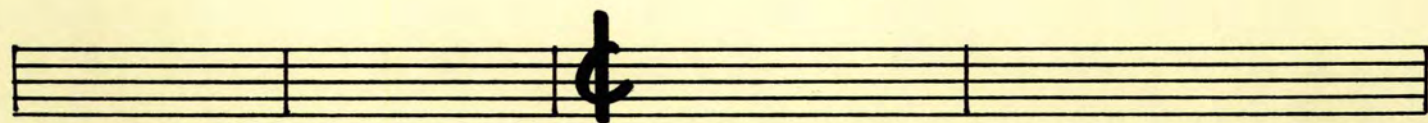
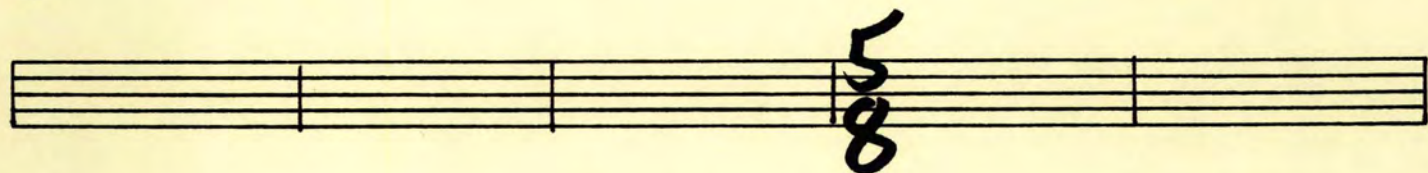
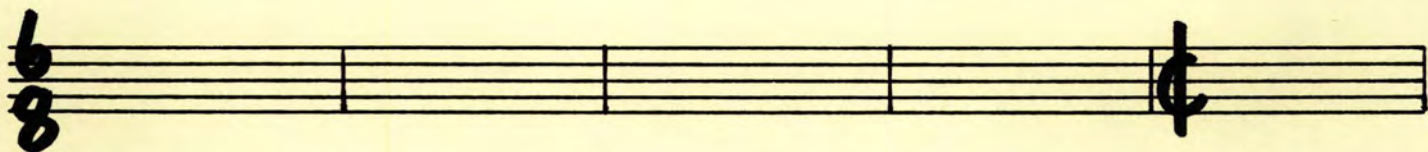


MAINSPRING

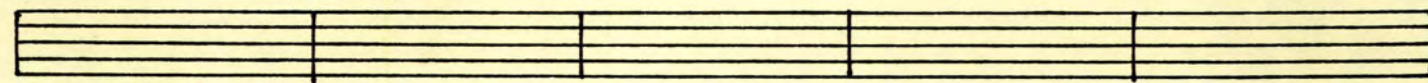
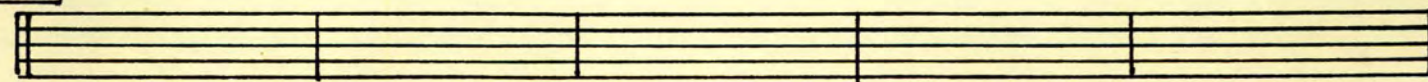
Intro

A¹₂

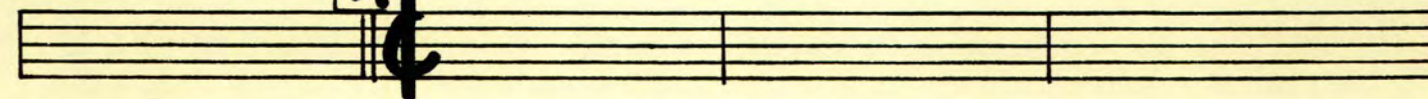
6
8



B



A³



Handwritten musical notation for the first system. It consists of four staves. The first staff has a time signature of 6/8. The second staff has a common time signature (C). The third staff has a time signature of 5/8. The fourth staff has a common time signature (C). There are also some additional markings, including a vertical line with a circle around it on the third staff.

Handwritten musical notation for the second system. It consists of four staves. The first staff is labeled "CODA" and contains a large circle with a vertical line through it. The second staff has a triplet of three notes, with "3" written above and below the notes, and "3-TIMES" written above the first note. The third staff has a triplet of three notes, with "3." written above the first note, and a 3/4 time signature. The fourth staff has a common time signature (C) and a wavy line representing a tremolo or similar effect.