

MOVING VIOLATION

SHUFFLE BLUES

♩ = 200

— BULKVICH —

(DRUMS)

(BASS)

Handwritten musical notation for the first two staves. The first staff is labeled '(DRUMS)' and the second is labeled '(BASS)'. Both staves are in 4/4 time and feature a series of eighth notes with accents. The bass staff includes a 'L.V.' (Lick Variation) symbol.

(GUITAR)

(BASS)

(GUIT.)

(PIANO)

(BASS)

Handwritten musical notation for the next two staves. The first staff is labeled '(GUITAR)' and the second is labeled '(BASS)'. The third staff is labeled '(GUIT.)' and the fourth is labeled '(PIANO)'. The fifth staff is labeled '(BASS)'. The notation includes various rhythmic patterns and accents.

17

An empty musical staff with a treble clef.

An empty musical staff with a treble clef.

29

An empty musical staff with a treble clef.

An empty musical staff with a treble clef.

41

An empty musical staff with a treble clef.

An empty musical staff with a treble clef.

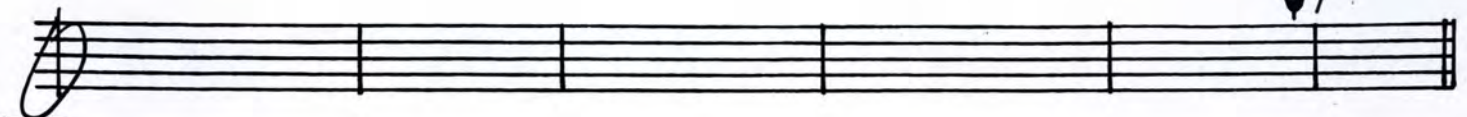
49

An empty musical staff with a treble clef.

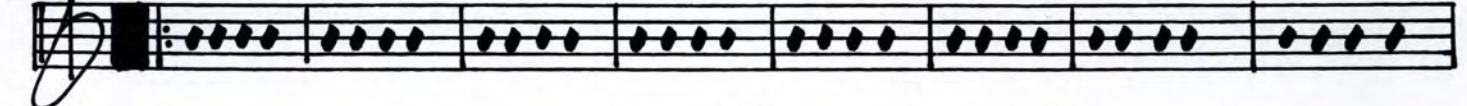
An empty musical staff with a treble clef.

2.

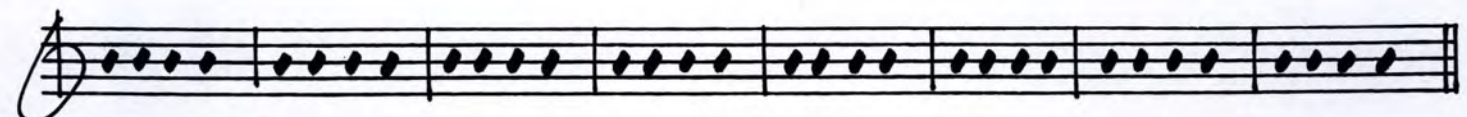
MOVING VIOLATION



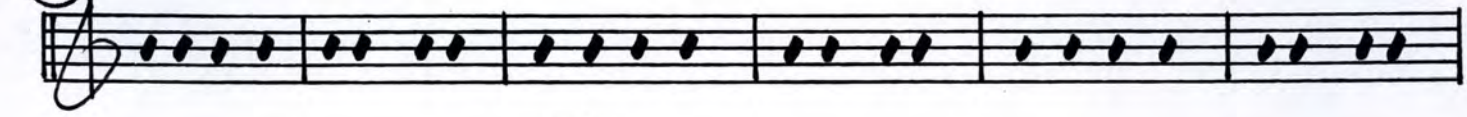
61



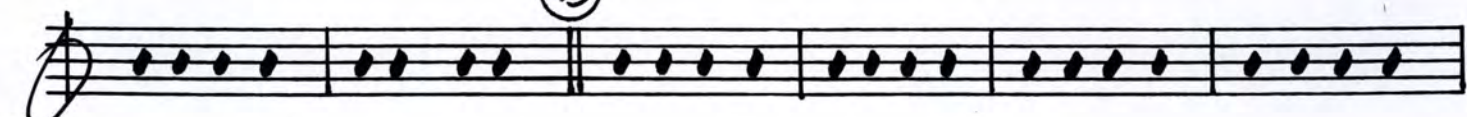
73



85



93



105

BASS SOLD 12

117

2



2

2

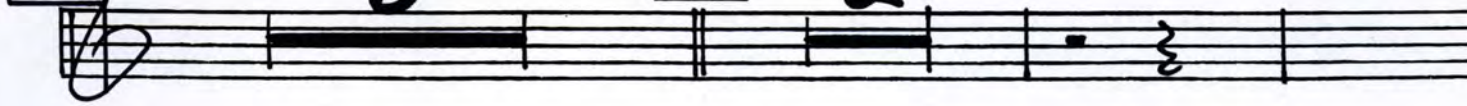


129

8

137

2



3.

MOVING VIOLATION

A musical staff in treble clef showing a sequence of notes. The first note is a half note with a '2' above it. The second note is a quarter note with a '2' above it. The third note is a quarter note with a '1' above it. The fourth note is a quarter note with a '2' above it. The fifth note is a quarter note with a '1' above it. The sixth note is a quarter note with a '1' above it. The staff ends with a double bar line.

149

An empty musical staff in treble clef, divided into four measures by vertical bar lines.

An empty musical staff in treble clef, divided into four measures by vertical bar lines.

An empty musical staff in treble clef, divided into four measures by vertical bar lines.

161

An empty musical staff in treble clef, divided into four measures by vertical bar lines.

An empty musical staff in treble clef, divided into four measures by vertical bar lines.

169

An empty musical staff in treble clef, divided into four measures by vertical bar lines.

A musical staff in treble clef showing a sequence of notes. The first note is a half note with a '1' above it. The second note is a quarter note. The third note is a quarter note. The fourth note is a quarter note. The staff ends with a double bar line and the text 'DC.' written above the notes.

4.

MOVING VIOLATION

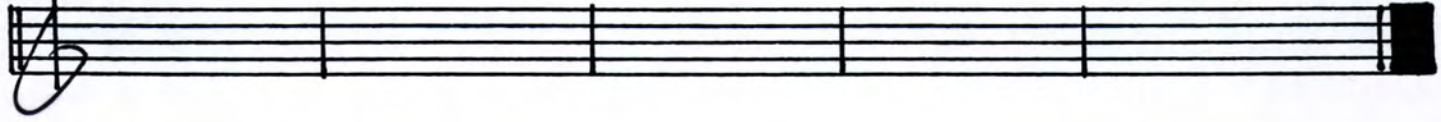
CODA

178

2



190



TRPT.

SAX

Guitar

PIANO

BASS

DRUMS

TRPT.

SAX

Guitar

P.

BASS

DRS.

MOVING VIOLATION