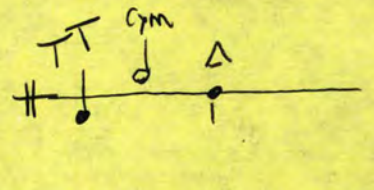


16" drum-set floor tom
(approx. 16") suspended cymbal

(1-hand/mallet)



1. TT 9

19

25 Cymbal bell with stick-end

31 TT

33

2.

3 Δ

9

17

23

31

41

3.

△

112

12 Stick on cym

120

137

145

Handwritten musical notation for the first system, showing two staves with notes and arrows indicating intervals or phrasing.

* 1. Five Ponies (Harmony)

2. SLOW = ♩ ♯

Sleeping Baby

G B⁻ E⁻ G B⁻ E⁻ A E⁻ A E⁻ [C B⁻ E⁻ G D B⁻ E⁻ A E⁻ A^{trill}] A

* 1. Medium C pedal in 'cello... Five Ponies

(upper right harmony)

3. Fast Birds Fly Away

D C B⁻ C B⁻ C E⁻ C E⁻ { A^{7(sus4)} } D B⁻ { D^(sus4) } G (fine)

(sets-up final cadence)

↑

↓

flizz

Arco

trio

Handwritten musical notation on a single staff. The notation includes notes, rests, and accidentals. Above the staff, there are handwritten labels: G^6 , $E^{\#}$, $A^{\#}$, and $D^{\#}$. A circled number '21' is written at the beginning. A '3.' is written above the first measure. Below the staff, measures are numbered 21 through 28.

Handwritten musical notation on a single staff. The notation includes notes, rests, and accidentals. Above the staff, there are handwritten labels: $E^{\#}$ and $D^{\#}$. A circled number '29' is written at the beginning. Four notes are circled individually. Below the staff, measures are numbered 29 through 36. A wavy line is drawn above the final measure.

Handwritten musical notation on a five-line staff. The notation includes notes, rests, and accidentals. Above the staff, there are circled numbers 17 and 18, and the text "Fl. vln". To the right, there are circled numbers 19, 20, 21, 22, 23, and 24. Above the staff, there are handwritten notes: "2.", "G⁶", "A¹¹", and "D¹¹".

Handwritten musical notation on a five-line staff. The notation includes notes, rests, and accidentals. Above the staff, there are circled numbers 25, 26, 27, 28, 29, 30, 31, and 32. Above the staff, there are handwritten notes: "2.", "G⁶", "A¹¹", and "D¹¹".

Handwritten musical notation on a five-line staff. The notation includes notes, rests, and accidentals. Below the staff, there is a circled number 48.

Two empty five-line musical staves.

Handwritten musical notation for the first system, including a treble clef and notes. Includes the label "Cello Flute" and "Flute notes" with red 'X' marks over some notes.

Handwritten musical notation for the second system, including a treble clef and notes. Includes the label "Sax" and "Gtr".

Handwritten musical notation for the third system, including a treble clef and notes. Includes the label "Sax" and "Gtr".

Cello Flute

Flute notes

(6 notes)

(Flute?)

1. FIRE FIGHTER (♩ = 80)

2. STEERING BOARD (♩ = 72)

3. GROSS FLY BURST (♩ = 96)

2 minutes =

Dr

Cb

Vc

Vn

DAVE THOMAS

Sax

Handwritten musical score for the first system, featuring four staves:

- Vln** (Violin): Treble clef, 4/4 time signature. Notes include quarter and eighth notes with stems, and a final half note with a sharp sign.
- Vla** (Viola): Bass clef, 4/4 time signature. Notes include quarter and eighth notes with stems, and a final half note with a sharp sign.
- Cllo** (Cello): Bass clef, 4/4 time signature. Notes include quarter and eighth notes with stems, and a final half note with a sharp sign.
- Bass**: Bass clef, 4/4 time signature. Notes include quarter and eighth notes with stems, and a final half note with a sharp sign.

Below the staves are two sets of empty five-line musical staves.

Handwritten musical score for the second system, featuring three staves:

- Vln** (Violin): Treble clef, 4/4 time signature. Notes include quarter and eighth notes with stems, and a final half note with a sharp sign.
- Vla** (Viola): Bass clef, 4/4 time signature. Notes include quarter and eighth notes with stems, and a final half note with a sharp sign.
- Cllo** (Cello): Bass clef, 4/4 time signature. Notes include quarter and eighth notes with stems, and a final half note with a sharp sign.

Below the staves are two sets of empty five-line musical staves.

Handwritten musical score for the third system, featuring one staff:

- Tremolo**: Treble clef, 4/4 time signature. The staff contains a series of tremolos (vertical lines) with stems, indicating rapid oscillation between notes. The notes are marked with a sharp sign.

Below the staff is one set of empty five-line musical staves.

Vln

♯	♯	♯	♯	♯	♯
♭	♭	♭	♭	♭	♭
♭	♭	♭	♭	♭	♭
♭	♭	♭	♭	♭	♭
♭	♭	♭	♭	♭	♭
♭	♭	♭	♭	♭	♭

Handwritten musical notation for Violin (Vln) on a five-line staff. The notation includes a treble clef, a key signature of one sharp (F#), and a series of notes. Colored brackets (red, green, blue, orange) are drawn around groups of notes, likely indicating intervals or specific melodic phrases.

Cello

♯	♯	♯	♯	♯	♯
♭	♭	♭	♭	♭	♭
♭	♭	♭	♭	♭	♭
♭	♭	♭	♭	♭	♭
♭	♭	♭	♭	♭	♭
♭	♭	♭	♭	♭	♭

Handwritten musical notation for Cello and Violin (Vln) on two staves. The notation includes a bass clef for the Cello and a treble clef for the Violin. The key signature is one sharp (F#). Colored brackets (red, green, blue, orange) are drawn around groups of notes on both staves.

Bass

♯	♯	♯	♯	♯	♯
♭	♭	♭	♭	♭	♭
♭	♭	♭	♭	♭	♭
♭	♭	♭	♭	♭	♭
♭	♭	♭	♭	♭	♭
♭	♭	♭	♭	♭	♭

Handwritten musical notation for Bass on a five-line staff. The notation includes a bass clef, a key signature of one sharp (F#), and a series of notes. Colored brackets (red, green, orange) are drawn around groups of notes.

Vlns.

Vla.

Cello

Db. bass

Handwritten musical notation for a string quartet consisting of Violins (Vlns.), Viola (Vla.), Cello, and Double Bass (Db. bass). The notation is on four staves. The Violins and Viola parts are in treble clef, while the Cello and Double Bass parts are in bass clef. The key signature is one sharp (F#). The notation includes various note values and rests.

D or G

Grade 1 or 1.5 (7th grade orchestra)

♩ in 4 (no faster values)

A B A with slow middle section

effects: single note, some multi note tremolos
notes?
octave harmonics
other creative sounds?

optional flute + percussion parts?

hand drum
flute
rattle

Bones

Violin 1
2
viola
cello
Bass

drum has no rhythmic
relation to melody

"It is of five sounds"
"The sound is fading away"
"The sound is coming near"

Little Shell Tribe (Chippewa)
Buffalo Fiddles

Pembina band of Chippewa

(3.) S F M (M ---) D... M... D... L D D D L, ---
D... S M... (ends on M)

(1.) L... S S M S... M... R D L L, D D R M M M
R D L L, D D L L L L, M... F M M M R D L L

(2.) (slow):

3/4: $\begin{array}{c} \text{F} \text{F} \text{F} \text{M} \text{M} \\ \text{L} \text{L} \text{L} \text{M} \text{M} \end{array} \mid \begin{array}{c} \text{M} \text{M} \text{M} \text{M} \\ \text{L} \text{L} \text{L} \text{M} \text{M} \end{array} \mid \begin{array}{c} \text{M} \text{M} \text{M} \text{M} \\ \text{L} \text{L} \text{L} \text{M} \text{M} \end{array} \mid \begin{array}{c} \text{M} \text{M} \text{M} \text{M} \\ \text{L} \text{L} \text{L} \text{M} \text{M} \end{array} \parallel$

2/4: $\begin{array}{c} \text{F} \text{F} \text{F} \text{M} \text{M} \\ \text{L} \text{L} \text{L} \text{M} \text{M} \end{array} \mid \begin{array}{c} \text{M} \text{M} \text{M} \text{M} \\ \text{L} \text{L} \text{L} \text{M} \text{M} \end{array} \mid \begin{array}{c} \text{M} \text{M} \text{M} \text{M} \\ \text{L} \text{L} \text{L} \text{M} \text{M} \end{array} \mid \begin{array}{c} \text{M} \text{M} \text{M} \text{M} \\ \text{L} \text{L} \text{L} \text{M} \text{M} \end{array} \parallel$

2/4: $\begin{array}{c} \text{L} \text{L} \text{L} \text{M} \text{M} \\ \text{L} \text{L} \text{L} \text{M} \text{M} \end{array} \mid \parallel \text{ (ends on F)}$

THREE NATIVE-CHILDREN SONGS

1. Five Ponies

Intro $\downarrow = 80$

8 1 2 3 4 5 6 7 8

Allegro arco

A 9 10 11 12 13 14 15 16

B 17 18 19 20 21 22 23 24

A 25 26 27 28 29 30 31 32

Coda (same as intro?)

33 34 35 36 37 38 39 40

Allegro Arco

2. Sleeping Baby

♩ = 72

Intro

1 2 3 4 5 6 7 8

A

9 10 11 12 13 14 15 16

B

17 18 19 20 21 22 23 24

25 26 27 28 29 30 31 32

1 chord

A

33 34 35 36 37 38 39 40

Coda/
ending

41 42 43 44 45 46 47 48

3. Birds Fly Away

$\text{♩} = 96$

Intro $\frac{4}{4}$ 1 2 3 4 5 6

19 $\frac{4}{4}$ 9 10 11 12 13 14 15 16

17 Harmonics (from 2.) 17 18 19 20 21 22 23 24

25 $\frac{4}{4}$ 25 26 27 28 29 30 31 32

33 $\frac{4}{4}$ 33 34 35 36 37 38 39 40

Coda 41 $\frac{4}{4}$ 41 42 43 44 45 46 47 48