

Emperor Penguins



By: Jill Reynolds

Table of Contents

What are emperor Penguins?.....	3
What do emperor penguins look like?.....	4
Where do emperor penguins live?.....	7
What do emperor penguins eat?.....	9
DO emperor penguins lay eggs?.....	11
Fun Facts.....	16

What are Emperor Penguins?

Emperor penguins are one of the largest species of penguins. They



are a type of bird that does not fly. These penguins are tough and can live in cold climates.

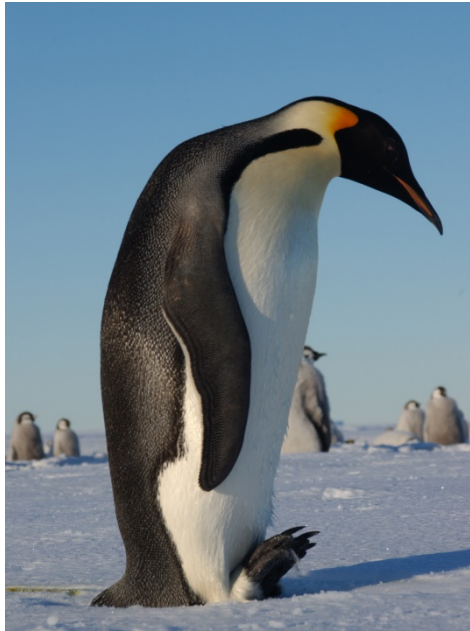
3

What do emperor penguins look like?

Emperor penguins are the tallest penguins. They are about 4 feet tall. They have yellow patches around the neck and ears. These penguins have a thick waterproof fur that covers their bodies.

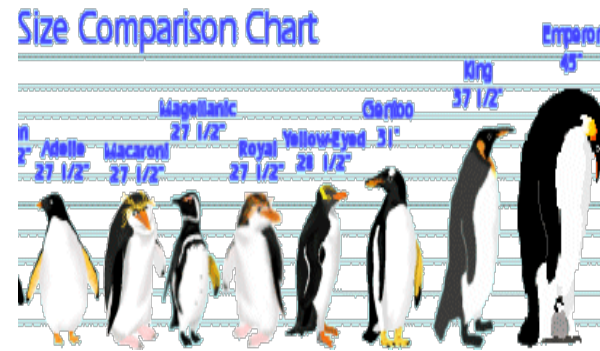
4

Emperor penguins weigh about 50-100 pounds. Their black and white fur help hide them from their predators.



5

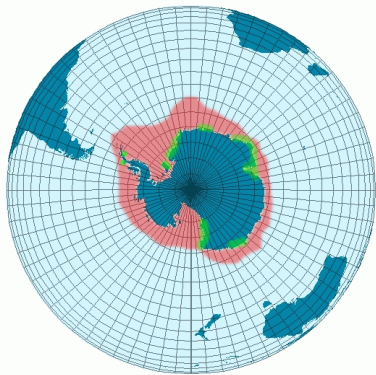
Look at all the different size of penguins!



6

Where do Emperor Penguins live?

Emperor penguins live in Antarctica in the cold weather. Their fur helps keep them warm.



Did you know that penguins travel in packs to help them keep warm? They take turns being warm on the inside of the circle.



What Do Emperor Penguins Eat?

The emperor penguins eat krill, squid, and other fish. The penguins dive deep into the sea to catch their food. They can stay underwater for 18 minutes! Their long and narrow beaks help them hunt for their food.



Did you know that emperor penguins eat more than any other type of penguin?



Do Emperor Penguins Lay Eggs?

The female penguin lays one egg every winter. Soon after, the male penguin takes the egg and sets it on his feet and warms it with the body.



11

Male penguins do not eat for 70 days when they are taking care of the baby. Once the egg hatches, the female penguin returns home and feeds and cares for the chick.



12

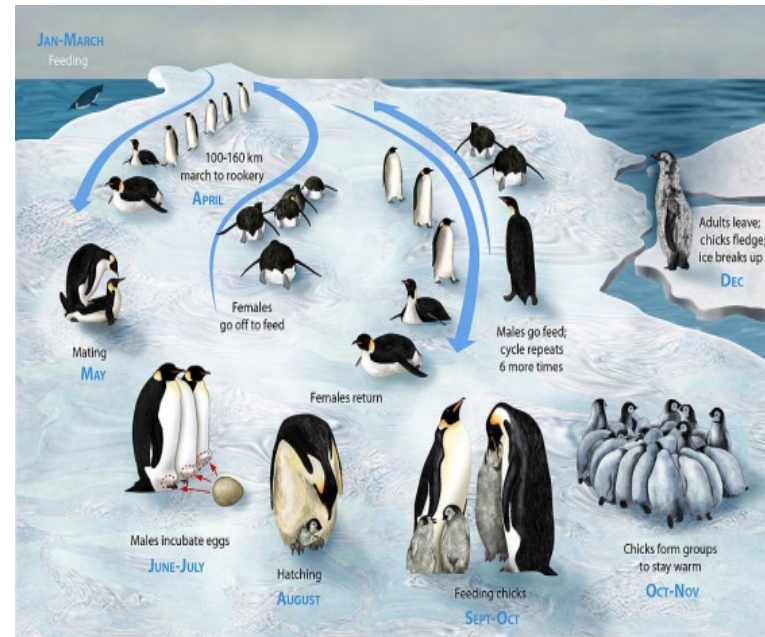
The mother penguin has a special pouch for the chick between her legs.



This keeps the baby penguin warm because they do not have their warm fur coat.

13

A yearly cycle for penguins!



Baby chicks develop a call so both parents can recognize them. In just a few short months, the penguins head towards the ocean and the chicks are ready to hunt on their own.



15

Fun Facts:

1. Emperor Penguins are only found in Antarctica.
2. Colonies consist of thousands of penguins.
3. They can live up to about 20 years old
4. Male penguins sleep for 20 hours a day when they are hatching an egg.
5. They can swim up to 7 miles per hour, but can only waddle 1.7 miles an hour.



16

Works Referenced

<https://www.flickr.com/photos/cmichel67/1240188915>
https://en.wikipedia.org/wiki/Emperor_penguin
<http://tomclarkblog.blogspot.com/2011/06/where-am-i-lost-emperor.html>
http://www.joyelonlineshopping.com/penguins/penguins_info.aspx
https://en.wikipedia.org/wiki/Emperor_penguin
https://upload.wikimedia.org/wikipedia/commons/thumb/7/72/PENGUIN_LIFECYCLE_H.JPG/1024px-PENGUIN_LIFECYCLE_H.JPG
<http://ourworldsview.com/wp-content/uploads/2012/08/Emperor-Penguin-Stock-Photo-%C2%A9-vladsilver-4194259.jpeg>
<https://vimeo.com/100761029>
[https://travelwild.com/resources/antarctica-](https://travelwild.com/resources/antarctica-wildlife/emperor-penguin/)

<wildlife/emperor-penguin/>
[http://www.atozkidsstuff.com/penguins.htm](http://www.atozkidsstuff.com/penguins.html)
[| https://en.wikipedia.org/wiki/Emperor_penguin](https://en.wikipedia.org/wiki/Emperor_penguin)
<https://pixabay.com/en/penguin-baby-antarctic-life-animal-429125/>
https://www.reddit.com/r/babywildanimals/comments/1u772g/baby_emperor_penguins/
<http://www.pixcove.com/emperor-penguins-glacial-life-lifetime-antarctic-wilderness-animal-physical-natural-ice-antarctica-wild-frost-cold/>
<http://kids.nationalgeographic.com/animals/emperor-penguin/#emperor-penguin-group-snow.jpg>
<http://www.arkive.org/emperor-penguin/aptenodytes-forsteri/>
<http://www.goodwp.com/animals/20032-penguin-winter-snow-baby-penguins->

[emperor-penguin.html](#)
<https://www.flickr.com/photos/cmichel67/11295790956>
<http://www.penguins-world.com/wp-content/uploads/Emperor-colony.jpg>
<http://www.animalfactguide.com/animal-facts/emperor-penguin/>
<http://www.penguinworld.com/types/emperor.html>

Common Core Standards

CCSS.ELA-LITERACY.RI.1.5

Know and use various text features (e.g., headings, tables of contents, glossaries, electronic menus, icons) to locate key facts or information in a text.

CCSS.ELA-LITERACY.RI.1.7

Use the illustrations and details in a text to describe its key ideas.

CCSS.ELA-LITERACY.RI.1.8

Identify the reasons an author gives to support points in a text.

CCSS.ELA-LITERACY.RI.1.10

With prompting and support, read informational texts appropriately complex for grade 1.

This e-book and any prints are released under a [CC BY 3.0 license](#) by the author.

This means that you are free to share, remix, transform, and build upon this book as long as you give appropriate credit to the original author.

Included works (e.g., images and other media) may have separate licensing requirements, and this release does not supersede or replace those requirements.

This e-book template is provided under a CC BY 3.0 license by the

University of Idaho College of Education. If you use, share, remix, or transform this template, you should include this page at the end of your book.

University of Idaho
College of Education