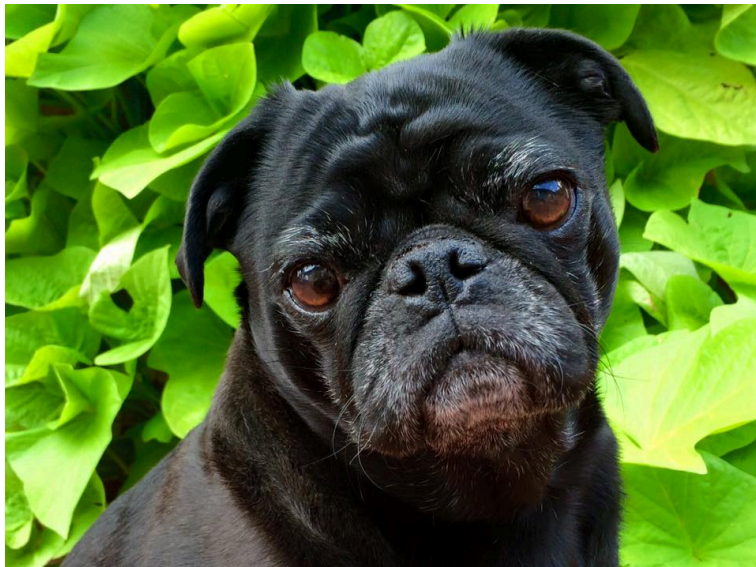


# Pugs

By: Abbie Rasulo



# Table of Contents

Chapter 1: Appearance	3-5
Chapter 2: Care Taking	6-8
Chapter 3: Personality	9-11
Glossary	12
Pug Quiz	13
Works Referenced	14
Common Core Standards	15

# What do pugs look like?

Pugs come in two different colors: black or ***fawn***. Their hair is short and silky.



(Black coat)



(Fawn coat)



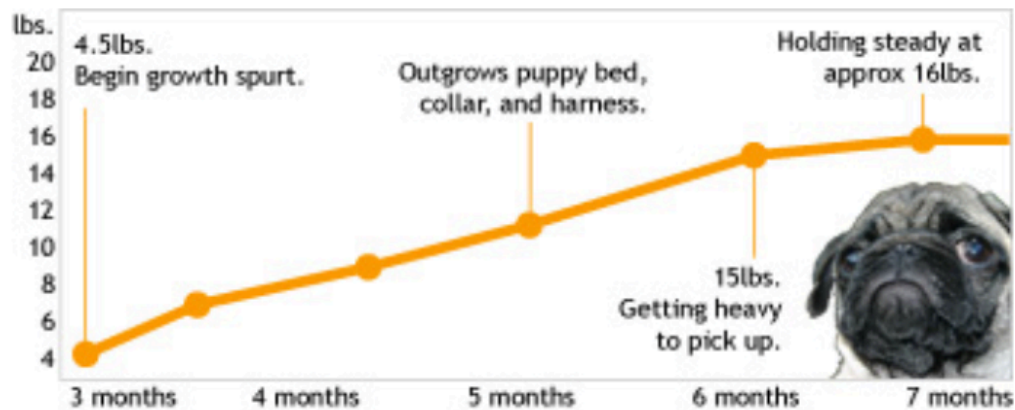
(Curly tail)

They are pretty easy to recognize by their curly tails and their wrinkled faces.



(Wrinkled face)

At 8 weeks old, pug puppies usually weigh 2 to 4 pounds.

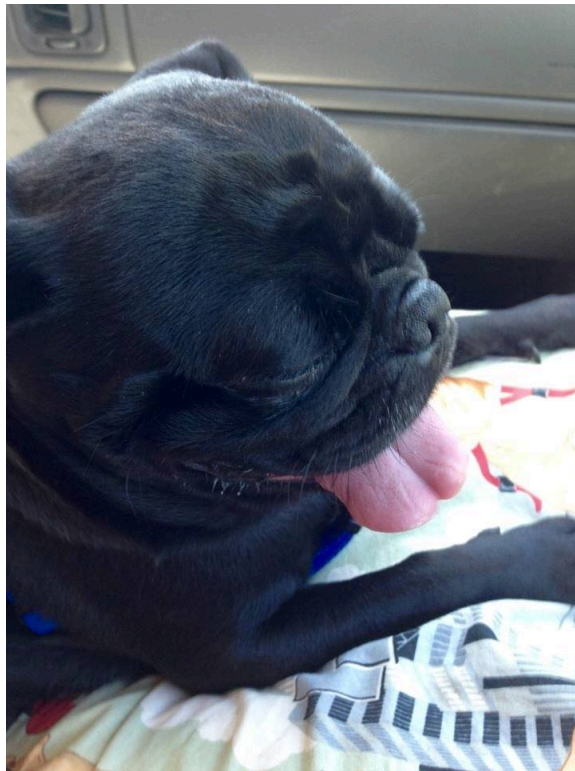


(Growth chart of pugs by age)

Healthy adult pugs typically weigh between 14 and 18 pounds, although there are many chubby pugs!

# How do you take care of a pug?

Pugs do not tolerate heat well due to their short, square-shaped *muzzles*, so be sure to keep them cool.



(Pugs *pant* to help cool off)



Pugs often overeat, so watch how much you feed them.



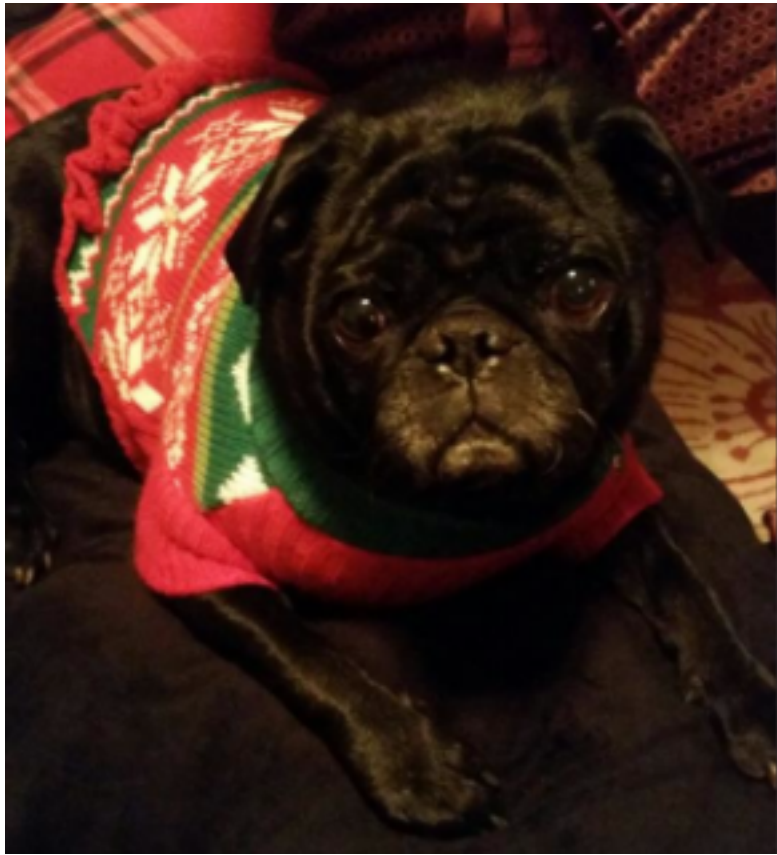
Adult pugs should be fed  $1\frac{1}{2}$  to 2 cups of food every day. This may be split up into two meals.



Pugs also need exercise to stay fit, so be sure to take them for a walk once a day.



# What are pugs like?



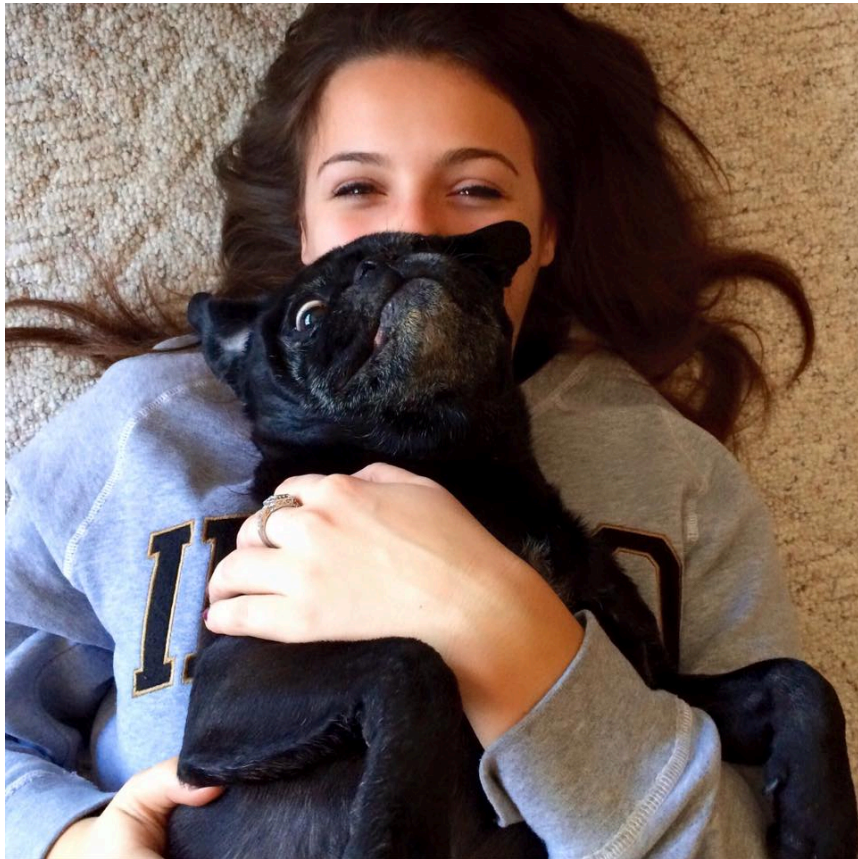
(A lot of pugs will even let you dress them up!)

Pugs make great family pets due to their loving *temperament* and desire to please people.

They love to sleep and can be very cuddly.



Each pug has his or her own *unique* personality that is guaranteed to make you laugh.



# Glossary

Appearance: the way something looks

Fawn: light yellow-tan coloring

Muzzle: the nose and mouth

Pant: stick out tongue and take short quick breaths

Temperament: the personality of a person or animal

Unique: different from others

# Pug Quiz

1. What is one physical feature of a pug?
2. What is one thing you should do to take care of a pug?
3. What is one new fact you learned about pugs? If you already knew all of these, what is another fact about them not discussed in the book?
4. How are pugs similar or different from another kind of dog? (Maybe think of a dog you or a friend has at home.)
5. What would you do if you had a pug for a day?



# Works Referenced

American Kennel Club – The Dog’s Champion. (n.d.).  
Retrieved March 10, 2016, from  
<http://www.akc.org/>

Pug Dog Age & Growth. (2012, August 4). Retrieved  
April 11, 2016, from  
<http://www.petpugdog.com/pug-dog-age-growth>

Pug Dog Breed Information and Pictures. (n.d.).  
Retrieved March 10, 2016, from  
<http://www.dogbreedinfo.com/pug.htm>

**\*Graph cited above, all other photos taken by  
author\***

# Common Core State Standards

## **CCSS.ELA-LITERACY.RI.1.2**

Identify the main topic and retell key details of a text

## **CCSS.ELA-LITERACY.RI.1.5**

Know and use various text features (e.g., headings, tables of contents, glossaries, electronic menus, icons) to locate key facts of informational text

## **CCSS.ELA-LITERACY.RI.1.7**

Use the illustrations and details in a text to describes key details

**CCSS.ELA-LITERACY.RI.1.10** With prompting and support, read informational texts appropriately complex for grade 1

This e-book and any prints are released under a [CC BY 3.0 license](#) by the author.

This means that you are free to share, remix, transform, and build upon this book as long as you give appropriate credit to the original author.

Included works (e.g., images and other media) may have separate licensing requirements, and this release does not supersede or replace those requirements.

This e-book template is provided under a CC BY 3.0 license by the University of Idaho College of Education. If you use, share, remix, or transform this template, you should include this page at the end of your book.

