

T Y P E

101

Hannah Barnes

Table of Contents

Serifs	3
Sans Serifs	4
Scripts	5
Display Fonts	6

Serif

Serif fonts have “feet,” the small edges or lines on the end of each character.



Serif fonts can be **block letter** style, **humanistic** (closer to handwritten) typewriter style,) **slab-serif** (rectangular serifs, very angular like the last two examples), or other variations.

Sans-serifs are found mostly in print media.

Sans-Serif

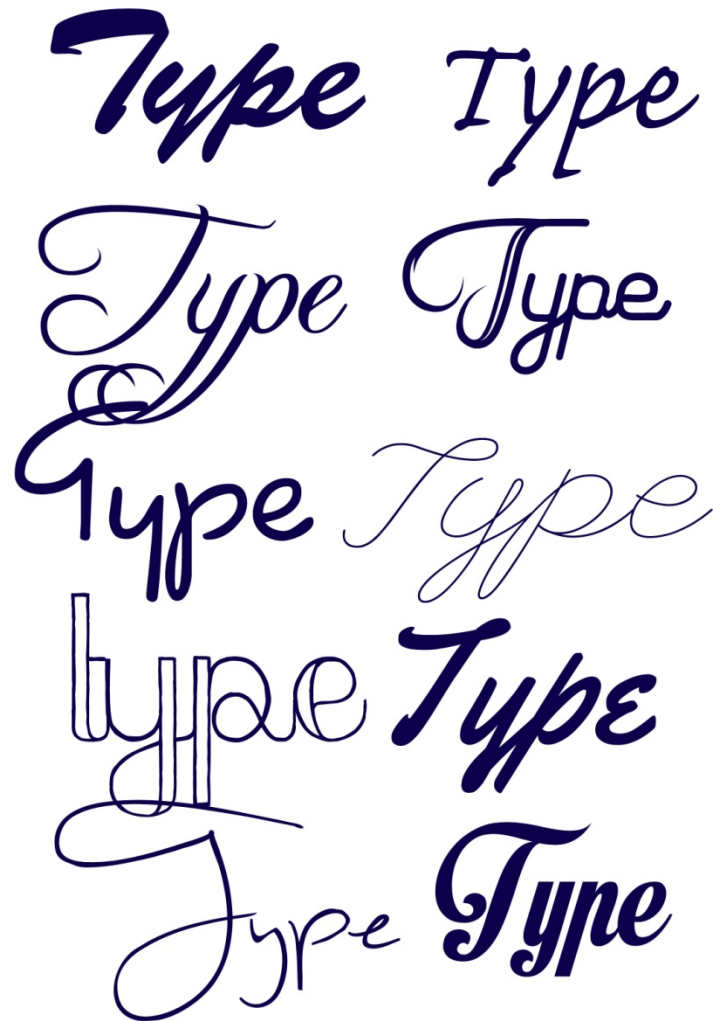
Sans-serif fonts do not have the “feet,”
and are generally similar.

A A A A A

Sans-serif fonts are used more for web-
based design.

Script

Script fonts vary from handwritten to calligraphic to ribbon-style.



DISPLAY

Display fonts are “themed,” eroded, distorted, or visually exciting.

TYPE TYPE

TYPE TYPE

TYPE TYPE

TYPE TYPE

Type TYPE

All typefaces used in this book are
approved for non-commercial
redistribution.

Common Core State Standards

CCSS.ELA-LITERACY.RL.K.1

With prompting and support, ask and answer questions about key details in a text.

CCSS.ELA-LITERACY.RL.K.4

Ask and answer questions about unknown words in a text.

CCSS.ELA-LITERACY.RL.K.6

With prompting and support, name the author and illustrator of a story and define the role of each in telling the story.

This e-book and any prints are released under a [CC BY 3.0 license](#) by the author.

This means that you are free to share, remix, transform, and build upon this book as long as you give appropriate credit to the original author.

Included works (e.g., images and other media) may have separate licensing requirements, and this release does not supersede or replace those requirements.

This e-book template is provided under a CC BY 3.0 license by the University of Idaho College of Education. If you use, share, remix, or transform this template, you should include this page at the end of your book.

University of Idaho
College of Education