



FROM THE MILL

MARCH MADNESS

As part of the University's response to COVID-19, the MILL will be closed until face to face classes resume. All reservations and events have been cancelled. The silver lining? Making isn't restricted to makerspaces! Patrons can still contact MILL staff for project help via email; patrons are also encouraged to post their projects to social media with the tagline #licensetoMILL. Projects and at-home DIY resources will be posted on MILL social media, so follow @uidahoMILL on Facebook and Instagram to stay updated!

LIGHTSABER CONSTRUCTION

The Lightsaber Construction workshop may have been cancelled, but patrons can still build custom sabers digitally! Go to <https://www.thingiverse.com/thing:4212348> to access pre-made lightsaber files. Download the file, then upload it to tinkercad.com. From here, customizing your saber is as easy as following the five minute tutorial. Patrons can print their custom parts at the MILL once face-to-face classes resume.

DIGITAL LIGHTSABER CONSTRUCTION

Create your own custom lightsaber online! Download the premade files from thingiverse.com, import them to tinkercad.com, and start designing!

Access saber files:

<https://www.thingiverse.com/thing:4212348>

Customize saber files:

<https://www.tinkercad.com/>

Questions? Contact cpace@uidaho.edu





UNIVERSITY OF IDAHO LIBRARY

2

FROM THE MILL

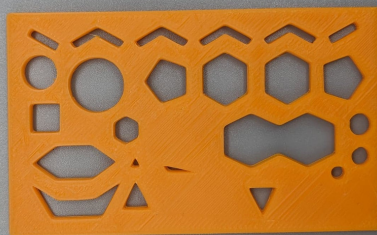
PROJECT HIGHLIGHTS

Due to reduced patronage in March, these are project highlights from January-March 2020

spicy lettuce



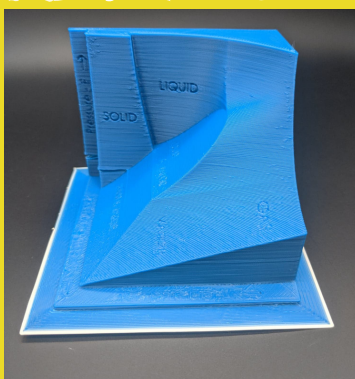
Student-designed screen print



3D printed organic chemistry stencil



3D printed giraffe phone stand



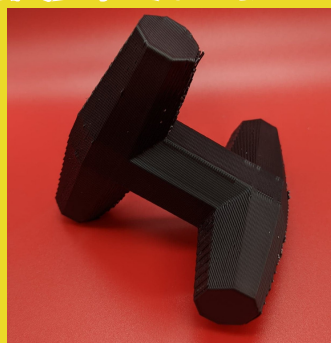
3D printed phase diagram



3D printed sugar skull



3D printed sugar skull (back)



3D printed wave breaker model



Student-made 3D printed model



Student-made 3D printed model