



Letters from the Library

Like the rest of campus, the Library is suddenly full of energy again. With a new presentation area, an expanded recording studio, a remodeled makerspace, and a new location for the Writing Center, our building is busier than ever. Keep reading to learn about some of our exciting new offerings, both in our building and online.



This issue features information about:

- New digital collections showcasing Latah County History and Cougar Dave
- Featured Library collections
- Upcoming Library events
- And more!

FEATURED STORIES

Collaborations with CLASS

The Library and the College of Letters, Arts & Social Sciences have a longstanding tradition of collaboration, exemplified by initiatives like the

[Center for Digital Inquiry & Learning](#). This center has been a cornerstone of our efforts in digital scholarship and humanities, showcasing the combined strengths of our two units in service to the University of Idaho community.



The first Renfrew Colloquium of Fall 2024

This fall, we're thrilled to introduce two new collaborative ventures. The [Writing Center](#) has relocated to the Library's second floor, positioning it alongside Academic Support Programs' [Vandal Tutoring](#) and our Library's comprehensive research and reference support services. We invite you to celebrate this new space at our ribbon-cutting ceremony on Friday, Sept. 6, at noon.

Additionally, the [Malcolm M. Renfrew Interdisciplinary Colloquium](#) now takes place on the first floor of the Library in our newly designed presentation area. Join us on Tuesdays at 12:30 p.m. to experience the dynamic interdisciplinary research and scholarship happening at U of I.

SPECIAL COLLECTIONS

Touring Latah County's Past

Although the return of college students may make it feel like summer is

over far too soon, there is still time to check items off your seasonal bucket list. Might I suggest taking a leisurely drive around Latah County? From the shady forests near the county's northern border, through the rolling hills of the Palouse, and down into the canyonlands of the Potlatch River drainage, there are more than enough interesting and picturesque spots to fill a day's itinerary. If you need help planning an excursion, I hope you will check out one of the University of Idaho Library's newest digital collections, "[Latah County Historic Places](#)".

"Latah County Historic Places" is a collaboration between the Latah Preservation Commission (LPC) and the Library. Each featured site was selected and described by commission volunteers, and those descriptions were originally shared in printed versions of the map. The printed map, while useful for many, did not include photographs of the sites. The new digital version of the touring map offers contemporary photos of each location as well as historic images to illustrate the ongoing significance of 90 structures and landmarks around the county.

One of those noteworthy landmarks is Cordelia Lutheran Church, the oldest standing Lutheran church building in the state. It was constructed in 1883 by Swedish Lutheran immigrants, and services were offered at the church until 1920. For many years after the building sat vacant. In 1948, renewed interest in the little country church saved it from further deterioration. Since that time, generations of dedicated volunteers have taken care of the space and infused it with life. Be sure to visit cordeliachurch.org to find their summer concert schedule!

The collection highlights some well-preserved commercial buildings that help tell the story of economic growth and community development in Latah County. The detailed brick facade of Genesee's Exchange Bank building, for example, reflects impressive wealth that existed in the farming community at the turn of the century. From the time of its construction in 1904 until the Depression of the 1930s, the bank operated at the corner of Fir Street and Walnut Avenue while a drug store owned by Fred Dicus occupied the western side of the structure. In more recent decades, the Post Office has resided in the building, along with other retail ventures.



Genesee Exchange Bank, circa 1910. Photo courtesy of Latah County Historical Society, 06-02-001.

While farming drove the development of southern Latah County, it was timber that built communities like Potlatch and Deary. Potlatch's City Hall is an enduring piece of that history. The Potlatch Lumber Company constructed the building in 1917 as its Administrative Building. From those offices, company leaders oversaw the many services offered in a company town, including the hospital, general store, fire department, and employee housing. There are other notable company assets profiled in the collection, like the Worker's Neighborhood, Nob Hill houses, and the Gymnasium.

The LPC works to preserve, promote, and educate the public about the historic physical fabric of Latah County, Idaho. It pursues its mission by submitting nominations to the National Register of Historic Places, installing smart signage at historic sites, conducting walking tours, writing brochures, printing flyers, designating historic sites/districts, and supporting Idaho's heritage organizations. The commission is a Certified Local Government that receives funding from Latah County and the National Park Service.

[EXPLORE THE COLLECTIONS >>](#)

SEASONAL FEATURE

Cougar Dave Digital Collection

Uncover Idaho wilderness history in the newly published [Cougar Dave Collection](#)! The collection documents the life of animal hunter David Lewis (i.e. Cougar Dave) in photographs, documents and audio. As Lewis' former property is now home to University of Idaho's Taylor Wilderness Research Center, the collection serves as an invaluable resource for understanding the region's zoological and ecological development.



David Lewis with dogs, Cougar Dave Collection, University of Idaho Library Digital Collections

Cougar Dave was a remarkable figure who lived alone in the Idaho wilderness for 50 years, gaining fame as a predatory animal hunter with the Forest Service, a role that earned him his nickname after killing over 1,000 cougars. Although much of his early life remains a mystery, it's known that he served in the Civil War and was involved in significant military campaigns. In 1934, Jess Taylor purchased Lewis' ranch, and after Lewis

left the ranch in 1936, his papers were eventually donated to the University of Idaho. These papers, originally kept in a tin box, now form a crucial part of our new digital collection, preserving the legacy of both Lewis and the Taylor Ranch.

[EXPLORE THE COLLECTIONS >>](#)

UPCOMING EVENTS

The Library offers workshops designed to promote awareness, build skills, and educate the University of Idaho community on research and learning in the information age.

Renfrew Colloquium

- Sept. 3, 12:30 p.m. – 1:30 p.m.: Reconceiving Silence: Contemporary Composing for Silent Film
- Sept. 10, 12:30 p.m. – 1:30 p.m.: Spin: How the World (and Almost Everything in It) Turns
- Sept. 17, 12:30 p.m. – 1:30 p.m.: Sustaining American Alliances in the 21st Century (Borah Symposium) - Held in the Vandal Ballroom, Pitman Center
- Sept. 24, 12:30 p.m. – 1:30 p.m.: Relational Research and Indigenous Futures: Adventures in Changing the Conditions of Higher Education

Learn @ the MILL

- Sept. 6, 12:30 p.m. – 2:30 p.m.: How to Make Stickers
- Sept. 17, 12:30 p.m. – 2:30 p.m.: Intro to the Sewing Machine
- Sept. 19, 12:30 p.m. – 2:30 p.m.: How to do iron on
- Sept. 23, 12:30 p.m. – 2:30 p.m.: How to 3D print
- Sept. 27, 12:30 p.m. – 1:30 p.m.: Intro to 3D pens

Make it @ the MILL

- Sept. 4, 12:30 p.m. – 4 p.m.: Notebooks

- Sept. 25, 12:30 p.m. – 4 p.m.: EVA Shields

Graduate Student Essentials

- Sept. 4, 12:30 p.m. – 1:30 p.m.: Cite Me Maybe: Open Access Publishing for Graduate Students
- Sept. 11, 12:30 p.m. – 1:30 p.m.: Getting Started with Popular Library Databases
- Sept. 17, 12:30 p.m. – 1:30 p.m.: Let's Start from the Beginning: Teaching with Primary Sources in Special Collections
- Sept. 25, 12:30 p.m. – 1:30 p.m.: Making Research Data Management Easier

[VIEW THE CALENDAR](#)

FEATURED COLLECTIONS

Featured Resources for September 2024

In this issue, we're highlighting two Library resources: [Oxford Music Online](#) and the [PBS Video Collection](#) (*Academic Video Online*).



Signed in as:

University of Idaho
AUTOMATICALLY SIGNED IN

Sign in to an additional subscriber account

Welcome to Oxford Music Online

- The gateway to *Grove Music Online*, with access to search *The Oxford Dictionary of Music* and *The Oxford Companion to Music*
- The authoritative resource for music research with over **52,000** articles written by nearly **9,000** scholars charting the diverse history and cultures of music around the globe

[Learn more](#)



FEATURED

National League of American Pen Women



Read the *Grove* entry on the *National League of American Pen Women*, newly written by Marian Wilson Kimber as part of *Grove's Women, Gender, and Sexuality Update Project*.

FEATURED

Xisto Bahia

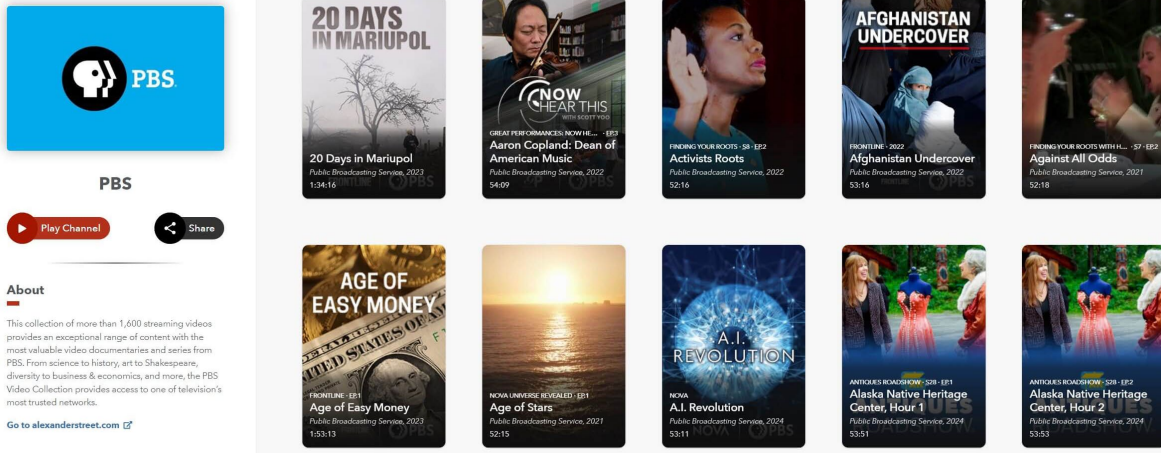


Read the *Grove* entry on *Xisto Bahia*, newly written by Luciano Caroso as part of *Grove's Ibero-Latin Update Project*.

Screenshot of the *Oxford Music Online* homepage

Oxford Music Online, formerly *Grove Music Online*, is a database that includes three significant reference works within the field of music: *Grove Music Online*, *The Oxford Companion to Music*, and *The Oxford Dictionary of Music*. Researchers can search for relevant articles and entries or browse by curated topics, instruments, eras, regions, place types, and occupations.

If you have any questions about *Oxford Music Online* or would like to discuss how to use it in your courses, please reach out to [Rochelle Smith](#) (Humanities Librarian).



Screenshot of a sample of videos in the *PBS Video Collection* released between 2019 to 2024

The *PBS Video Collection* (available in *Academic Video Online*), includes more than 1,600 streaming documentaries and series from PBS across subject areas.

Faculty and instructors can generate direct links and embed codes for each video as well as create clips to share with students. In addition, upon signing in, faculty and instructors can use the [‘Interactions’ feature](#) to add interactive and pedagogical tools to videos, such as discussion prompts and multiple-choice questions.

If you have any questions about the *PBS Video Collection* or would like to discuss how to use it in your courses, please reach out to your [subject librarian](#).

[A complete list of our resources can be found on our website >>>](#)

[Share your feedback on these resources >>>](#)

WHAT WE'RE READING

What We're Reading: Mary Stuart McDevitt, Library Technology Solutions Partner

The [Frieren: Beyond Journey's End](#) series is a great take on a hero's journey. Frieren is an elf that has already gone on her epic adventure with her friends, and this story is about her life afterwards. This story ties the epic fantasy setting with emotional story telling as we walk through the world with Frieren. We will go through the world as she remembers her dead companions and their adventures, all while making new friends and new adventures.

I am reading also reading [Mistborn](#) by Brandon Sanderson in preparation for his new book coming out this November. *Mistborn* is about a street thief, Vin, that is lucky enough to have the powers of a mistborn and can fight back against the Lord Ruler and the Final Empire. While most books series take three books to get through their plot and character arcs, *Mistborn* does it in one. This book will keep you on the edge of your seat while you engage with its hard magic system and world.

[FIND BOOKS >>](#)

GIVE TO THE LIBRARY

We could not provide such wide-ranging services, collections, and spaces without help from our supporters. Interested in making a difference? Give to the Library today!

[GIVE NOW](#)



Copyright © 2024 University of Idaho, All rights reserved.

You received this email because of your affiliation with the University of Idaho.

University of Idaho
875 Perimeter Drive
Moscow, ID 83844
info@uidaho.edu

Not the email you wanted to receive? Customize the emails you receive from University of Idaho by [updating preferences](#) for . You can also [unsubscribe](#) from this email.