



University of Idaho
Library

Web Mapping for Every Discipline – How to Use ArcGIS Online

Bruce Godfrey
GIS Librarian

bgodfrey@uidaho.edu

Tell me about your mapping experience

- What software have you used? How recently? For a course/work?

Available GIS resources

- [University of Idaho Library | GIS Resources \(uidaho.edu\)](https://uidaho.edu/library/gis-resources)

Software ▼

Services ▼

Teaching & Learning ▼

Data ▼

Events ▼

Selecting GIS software

- Open source



Open Source GIS Tools

There are numerous desktop GIS software programs such as **QGIS**. There are also many web-based options such as **Mapbox** and **Carto**. Take a look at the **OSGeo projects** to help you find an open source technology to meet your needs.

Also, take a look at a list of **Open-Source GIS Software** put together by Syracuse University or **The History of Open Source GIS** by makepath.



Windows, MacOS, Linux

Selecting GIS software

- Site License with Esri (proprietary)

Esri Products



The University of Idaho participates in the **Education Institution License Program** with **Environmental Systems Research Institute, Inc. (Esri)**.

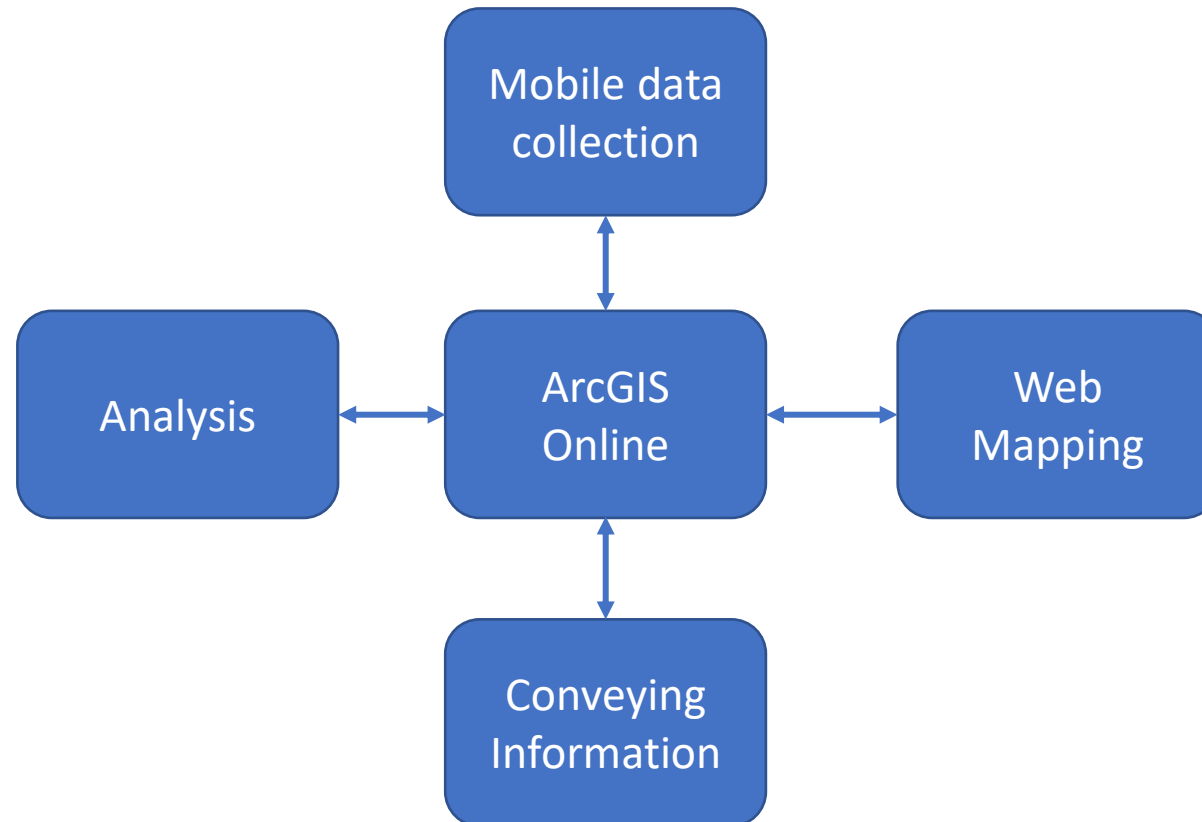
Many products are available for teaching, research, and administrative uses; others are available only for teaching and research. Commercial use of the software is not a **permitted use** under the License.

Along with software, U of I students, faculty, and staff have access to Esri no-cost, self-paced online learning opportunities. **Sign in** using your U of I Account.

Have questions? Contact **Bruce Godfrey**, GIS Librarian.

Selecting GIS software

- Esri – ArcGIS Platform



Services - support

- [University of Idaho Library | Data Hub: Geospatial and Data Sciences Support \(uidaho.edu\)](https://uidaho.edu/library/data-hub)
 - Space and service point providing co-curricular and research support in the areas of geographic information systems, data sciences, data analysis and visualization, and research data management.

UI LIBRARY

MAP ROOM HOURS:

Monday - Friday
8am - 5pm



If you need assistance accessing or finding maps, please email Rami Attebury at rattebur@uidaho.edu.

Atlases have been moved upstairs into our general collection. If you need assistance finding an atlas, you can ask for help at the Reference Desk, also located online: <https://www.lib.uidaho.edu/help/>

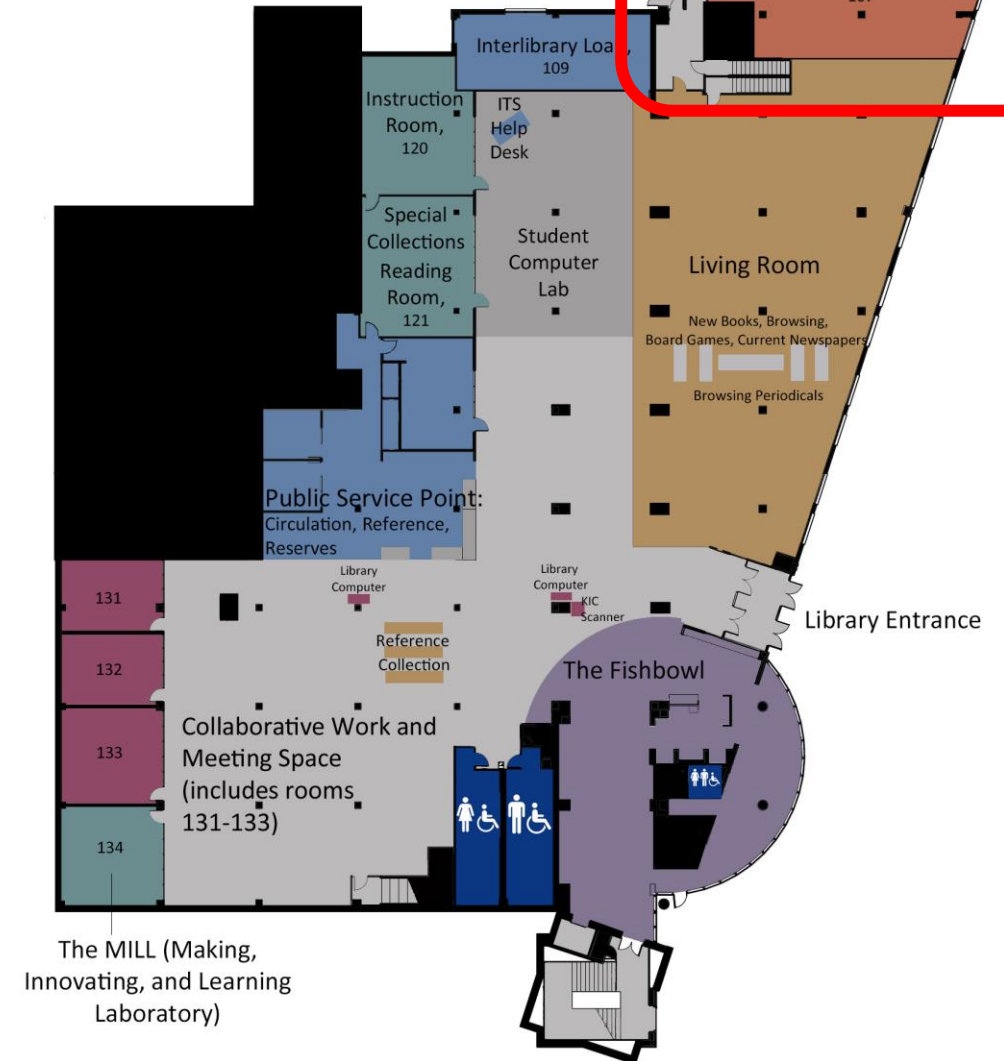
The Map Room is undergoing renovation to make room for the new Data Hub. Closures may occur without notice.

Services - support

- [University of Idaho Library | Data Hub: Geospatial and Data Science Support \(uidaho.edu\)](https://uidaho.edu)
 - Room 107 - 1st floor of the library (NW corner)

First Floor

Reference, Computer Help Desk,
Circulation and Reserve
Group and Individual Study Areas



Services - support

- [University of Idaho Library | Data Hub: Geospatial and Data Sciences Support \(uidaho.edu\)](https://uidaho.edu)
 - Data Hub Librarian assistance is available Monday - Friday, 11am - 3pm
 - In person
 - Phone (885-7724)
 - Remote
 - Chat (icon on web page)
 - Zoom

Map Room

The Map Room is home to the physical portion of the University of Idaho's map collection. If you have any questions about finding a map, contact the Reference Desk.

Data Hub

Located in the Map Room, the Data Hub is a space in the library, staffed by librarians and partners from around campus, to assist with mapping and GIS (geographic information systems), data sciences, quantitative analysis and visualization, and research data management.



University of Idaho
Library

Services - support

- Esri Technical Support
 - Contact Bruce Godfrey (bgodfrey@uidaho.edu) to submit a case on your behalf

Teaching & learning

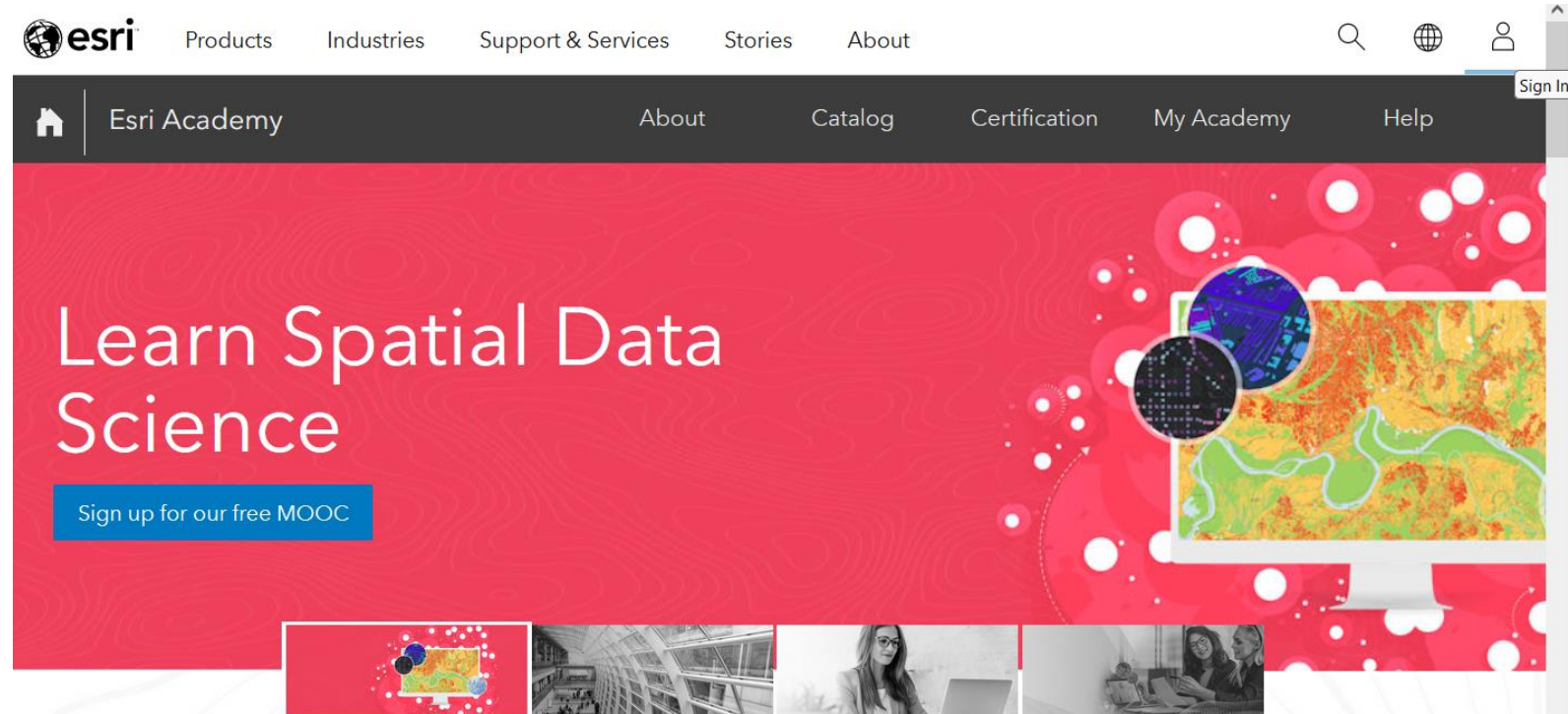
- See the 'Resources' button on a product web page

[Mapping Products | GIS Software Products - Esri](#)

- [ArcGIS Online Resources | Tutorials, Documentation, Videos & More \(esri.com\)](#)
- [ArcGIS Pro Resources | Tutorials, Documentation, Videos & More \(esri.com\)](#)

Teaching & learning

- Esri Self-Paced E-Learning Courses (Esri Training)
Access to no-cost self-paced e-learning resources.



Search for the training you need



Teaching & learning

- <https://esri.com/training>
- [Sign in](#) using your U of I Account
- Explore the Catalog

Sign in with



ArcGIS login

Your ArcGIS organization's URL

Udaho

[Enter another organization](#)

Course Catalog
Explore our learning resource collection.

Courses by Schedule
View upcoming classes and online training events.

Courses by Location
View classes offered at Esri training centers.

New and Retired Training
View the latest training options available and what is scheduled to be retired.

Learning Plans
Master a focused topic with one of our plans.



Prefer Custom to One Size Fits All?

Copy an Esri learning plan and add or remove courses to make it your own.

[View Learning Plans](#)

Cost

Teaching & learning

- <https://esri.com/training>
- [Sign in](#) using your U of I Account
- Explore the Course Catalog

The screenshot displays the Esri Training website interface. At the top, a dark blue banner with a bokeh effect contains the text "Explore Our Courses" in white. Below this banner is a white search bar with the placeholder text "Search Courses" and a magnifying glass icon. To the right of the search bar is a circular share icon. Below the search bar, the text "Search Tips" is visible. Further down, a section titled "Browse by Topic" features a horizontal row of nine topic-based tiles. Each tile contains a blue icon and a text label: "Getting Started" (cloud and document icon), "ArcGIS Products" (map and building icon), "Data Management" (database cylinder icon), "Mapping" (map and laptop icon), "Spatial Analysis & Data Science" (network diagram icon), "Field Operations" (person and smartphone icon), "Scripting & Development" (wrench and code icon), "Imagery & Remote Sensing" (satellite and map icon), and "3D Visualization & Analytics" (3D bar chart icon).

Explore Our Courses

Search Courses

Search Tips

Browse by Topic

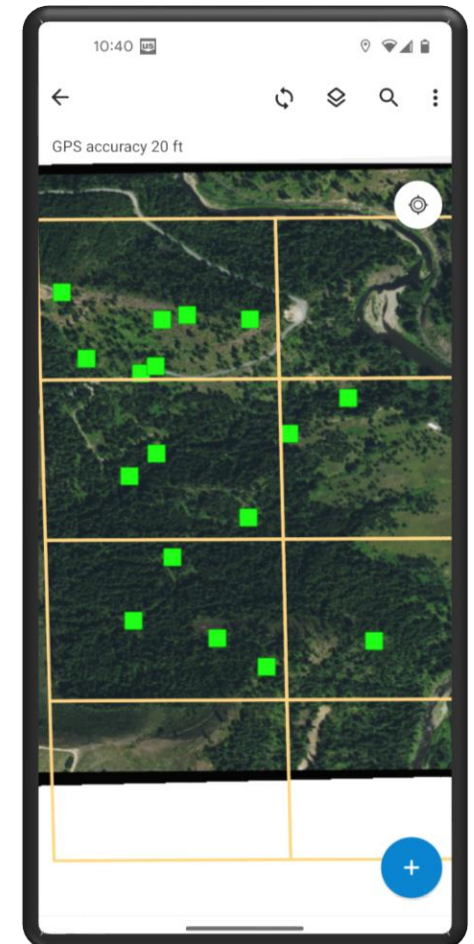
- Getting Started
- ArcGIS Products
- Data Management
- Mapping
- Spatial Analysis & Data Science
- Field Operations
- Scripting & Development
- Imagery & Remote Sensing
- 3D Visualization & Analytics

What is ArcGIS Online?

- A cloud-based global collaborative platform hosted by Esri that allows you to use, create, manage, analyze, and share maps, apps, and data.
 - <https://arcgis.com>
 - Ongoing evolution from desktop to web-centric GIS
 - U of I Portal for Teaching & Scholarly Research:
 - <https://uidaho.maps.arcgis.com>
 - Items are not backed up by the U of I

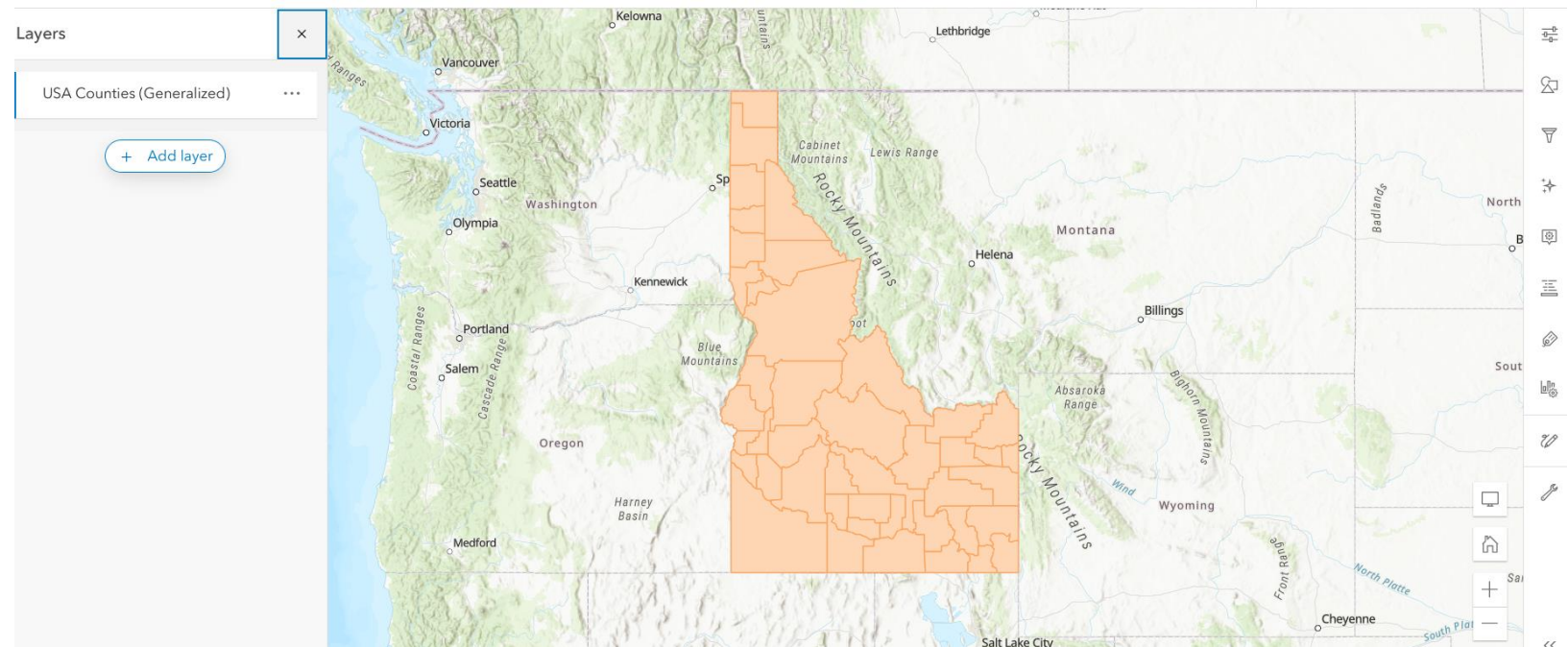
Apps for mobile data collection

- [ArcGIS Field Maps](#) - map-centric app for mobile data collection
- [ArcGIS Survey123](#) - form-centric app for collecting survey data
- [QuickCapture](#) – quickly collect field observations



Apps for web mapping

- [Scene Viewer](#) – create 3D web maps
- [Map Viewer](#) – create 2D web maps



Apps for analysis

- [ArcGIS Pro](#) – desktop GIS (Windows)
- [CityEngine](#) – desktop 3D city design software (Windows/Linux)
- [Drone2Map](#) – desktop GIS drone mapping (Windows)
- [ArcGIS Maps for Office](#) – add-in to make maps in Excel
- [Insights](#) - location analytics
- [Notebooks](#) – spatial analysis & visualization

Apps for analysis

- [Business Analyst](#) – site selection & market analysis
- [Community Analyst](#) – analyze impacts of policy decisions
- [GeoPlanner](#) – scenario planning for natural systems
- [ArcGIS Urban](#) – city planning

Apps for the conveying information

- [StoryMaps](#) - digital storytelling
 - Embed text, maps, pictures, video, audio to tell a story
- [Dashboards](#) - information at-a-glance
- [Hub](#) - community engagement initiatives
- [Instant apps](#) – choose a template -> embed a web map in a web app
- [Experience Builder](#) – drag-and-drop web app building

App development

- [AppStudio](#) – develop apps for mobile devices
- [API & SDK](#) – create apps using application programming interfaces and software development kits

ArcGIS Online

- Teaching & Scholarly Research Portal
 - <https://uidaho.maps.arcgis.com>
 - Sign in using U of I Vandal NetID

Sharing content between apps and the portal

- Example
 - Collect data in the field with Field Maps, sync those data with the portal, then access those data from Pro
 - ArcGIS Field Maps ↔ ArcGIS Online ↔ ArcGIS Pro
 - Create a map in Pro, share it as a web map in ArcGIS Online, then use that map in a story
 - ArcGIS Pro → ArcGIS Online → ArcGIS StoryMaps
 - Or Field Maps to ArcGIS Online to Story Maps

Sharing content with others

- All items are 'private' by default
- Users choose to make them available more broadly
- Groups can include members of other ArcGIS Online organizations (e. g. governmental or other academic institutions) unless it is a shared update group
- An item can have multiple editors from the same organization if it's in a group having shared update enabled



Events

GIS Day @ University of Idaho



- Call for Proposals Open Now!
- [Library Workshops](#)